

# PQ

## 50Hz

### Stainless Steel Submersible Fountain Pump



E190701  
Code:1500067425  
subject to amendments



**REPRESENTATIVE IN GEORGIA**

Address: Tbilisi; Libani street 2

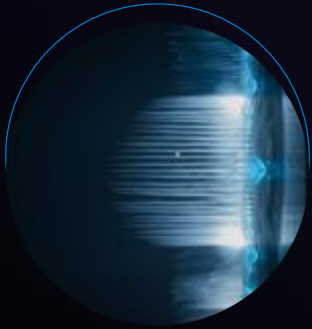
Tel: +995 032 248 35 62

Email: [info@cnp.ge](mailto:info@cnp.ge)

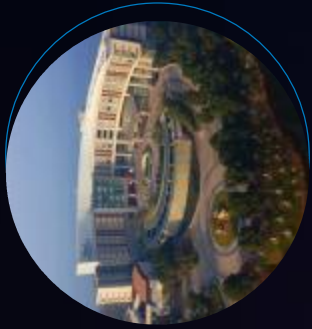
Website: [cnp.ge](http://cnp.ge)

Pumping Water Pumping Honor

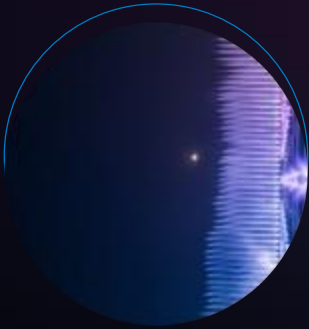
Stock code:300145



Suzhou Oriental Gate  
Jinji Lake Musical Fountain



Kunshan Fairmont Hotel



Shanxi Shuiyun Donghu  
Musical Fountain



Shanghai Southern  
International Building



Suzhou Expo Center



Zhejiang Jiaoshan  
Pacific Square Fountain



## Company profile

Founded in 1991, Nanfang Zhongjin Environment Co., Ltd. (hereinafter referred to as CNP) has been listed on the Shenzhen Stock Exchange on 9th December 2010; Stock name: CNP; Stock code: 300145.

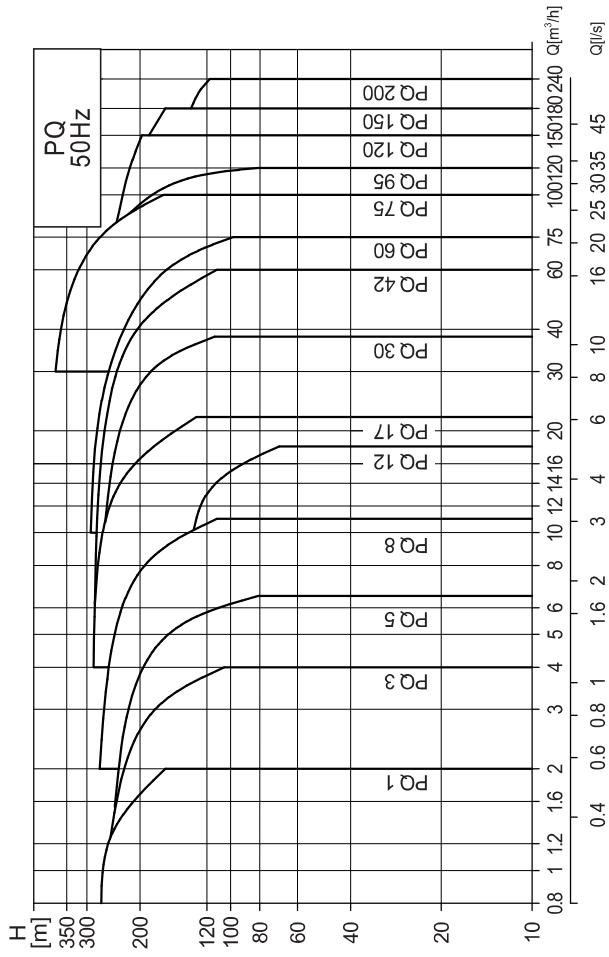
As the first enterprise specializing in the research and large-scale production of stainless steel stamping welded centrifugal pump in China, CNP is currently the professional manufacturer with the highest volume of production and marketing in that industry. It ranks first in the country in terms of product scope, sales volume, and production quality. The company has set up a complete network of marketing services to meet the requirements of overseas markets as well as domestic needs. The products have seen a wide range of application in the area of pressurization, industry, living water, cycling of air-conditioning water, heat supply, fire extinguishing system, pumping of underground water, treatment of sewage and waste water, chemical industry and desalination of sea water etc.

CNP has now entered into the fast track of development and has taken a major step forward in forging China Strong Pump Enterprise and World's famous brand in the Pump Industry. In order to better meet the client's needs and requirements for expansion, it has set up a wide network of selling and service, as well as offices and service centers in major cities in China, which are aimed at providing timely and effective services for our clients. Meanwhile, our company has successfully penetrated into the world market by forging a good business relationship with more than 50 countries and regions in the Europe, Northern American, and Southeast Asia etc.

# Contents

- Performance scope ..... 1
- Product range ..... 1
- Introduction ..... 2
- Working conditions ..... 2
- NEMA motor ..... 2
- Model definition ..... 2
- Curve conditions ..... 2
- Features ..... 3
- Sectional drawing ..... 4
- Material list ..... 4
- PQ 1,3,5 performance table ..... 5
- PQ 8,12,17 performance table ..... 6
- PQ 30,42 performance table ..... 7
- PQ 60,75 performance table ..... 8
- PQ 95,125 performance table ..... 9
- PQ 150,200 performance table ..... 10
- Performance curves ..... 11
- Installation dimensions ..... 25

## Performance scope



## Product range

Model	Features		Rated flow		Flow range		Max.pressure [bar]	Motor power [kW]	Max. efficiency [%]	Pipe thread connection
	[m³/h]	[l/s]	[m³/h]	[l/s]						
PQ1	1	0.28	0.2-2	0.06-0.56	28	0.37-2.2	45	Rp1 ¼		
PQ3	3	0.83	0.8-4	0.22-1.1	25	0.37-3	56	Rp1 ¼		
PQ5	5	1.39	1-6.5	0.28-1.8	24	0.37-4	59	Rp1 ½		
PQ8	8	2.22	2-11	0.56-3.1	27	0.75-7.5	60	Rp2		
PQ12	12	3.33	3-18	0.83-5	16	1.5-7.5	60	Rp2		
PQ17	17	4.72	4-22	1.11-6.1	26	0.55-15	73	Rp2 ½		
PQ30	30	8.33	5-38	1.39-10.6	28	1.1-22	74	Rp3		
PQ42	42	11.7	5-60	1.39-16.7	28	1.1-37	75	Rp3		
PQ60	60	16.7	10-75	2.8-20.8	29	2.2-37	79	Rp4		
PQ75	75	20.8	30-100	8.3-27.8	38	7.5-75	79	Rp5		
PQ95	95	26.4	40-120	11.1-33.3	34	9.2-75	80	Rp5		
PQ120	120	33.3	60-150	16.6-41.6	25	11-110	77	Rp6		
PQ150	150	41.6	80-180	22.2-50	23	9.2-110	77	Rp6		
PQ200	200	55.6	100-240	27.8-66.7	16	30-110	79	Rp6		

## Introduction

PQ series Stainless Steel Submersible Fountain Pump, is composed of submersible motor and pump which are directly connected via a coupling. It is convenient for use and maintenance with simple structure, compact design, beautiful appearance, light weight and high reliability.

## Working conditions

Liquid temperature:  $\leq 20^{\circ}\text{C}$

pH value: 6.5~8.5

Max. working pressure: 38 bar

Max. depth: 70m

Working frequency: vary from 5Hz to 50Hz

User has to configure corresponding motor protector to ensure safe and stable operation of the pump.

## NEMA motor

PQ series pumps are equipped with highly efficient submersible motors, with leading manufacturing technology and reliable quality assurance system. The motor interface meets NEMA industrial installation standards.

4" motor Stainless steel motor (connecting flange: copper or stainless steel)

Oil-filled motor

Single phase: 0.37KW~2.2KW

Three phase: 0.37KW~7.5KW

6" motor Cast iron motor (standard configuration), stainless steel motor (optional)

Oil-filled motor

Three phase: 4KW~45KW

8" motor Cast iron motor (standard configuration), stainless steel motor (optional)

Water-filled motor

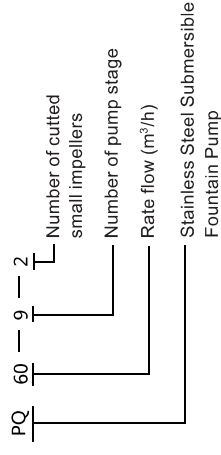
Three phase: 22KW~110KW

10" motor Cast iron motor (standard configuration), stainless steel motor (optional)

Water-filled motor

Three phase: 30KW~110KW

## Model definition



## Curve conditions

Curve tolerance in conformity to ISO9906:2012, Grade 3B.  
All curves are based on measured values of 2850rpm or 2900rpm under 50Hz.

Measurement is done with  $20^{\circ}\text{C}$  air-free water, kinematic viscosity of  $1\text{mm}^2/\text{sec}$ . If the thickness and density of the pumped liquid is different from water, the motor power should be adjusted.

The operation of pump shall refer to the performance region indicated by the thickened curve to prevent overheating due to too small flow rate or overload of motor due to too large flow rate.

Q/H: Curve means Flow/Head curve under rated flow.  
Power curve: P2 means single stage input power, curve has full impeller type (1/1) and with small impeller type (2/3)

Efficiency curve:  $\eta$  means efficiency of single stage.

## Features

### Wide performance range

PQ series pump can work effectively from 0.2 to 240  $\text{m}^3/\text{h}$ . The corresponding flow series can be selected in different stages to meet the requirements of different flow and heads.

### Environmental friendly

Main components of SJ are made of stainless steel and the motor coolant complies with American PDA standard which guarantee long-term reliable operation of pump. It will not pollute water quality whether running for a long time or in special circumstances. Besides, the pump will shine as new after longtime usage and maintenance.

### Easy installation and maintenance

Main parts of the pump are all stamped and welded using stainless steel sheet, which reduces the weight significantly, makes it easier to operate, and also reduces the cost and time of installation and maintenance.

### Imported filter

The pump inlet is equipped with a filter to prevent large particles from entering pump body, filter hole dimension is no more than 70% of minimum size of the pump passage.

### Cable jacket

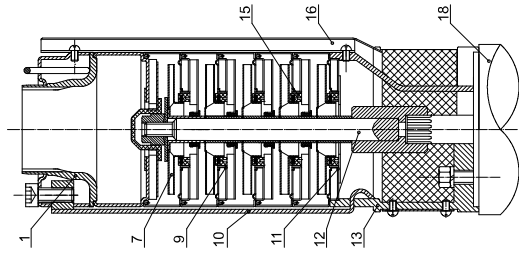
The cable sheath on the outside of the electric pump fixes the cable to pump body to prevent the cable from being entangled, and to protect the cable insulation from damage.

### Inverter motor

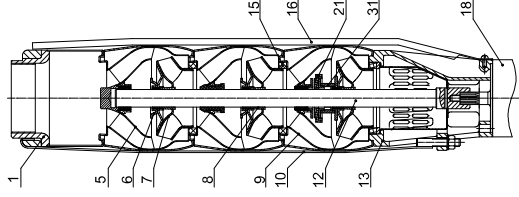
Protection is IP68, safe and reliable. Adopting involute spline, automatic alignment function between rotor and water pump to reduce wear and mechanical loss.



### Sectional drawing PQ5



### Sectional drawing PQ42



### Performance table PQ1

Model	Motor (kW)	Q (m³/h)	0.2	0.4	0.6	0.8	1.0	1.2	1.4	1.6	1.8	2.0
1-6	0.37	H (m)	33.5	33	32	31	30	29	27	25	22	19
1-9	0.37		51	50	49	48	46	44	41	38	34	29
1-13	0.55		73	72	71	69	67	64	60	55	49	42
1-17	0.75		96	95	92	90	87	84	78	71	64	55
1-21	1.1		119	118	115	112	108	103	97	89	80	69
1-25	1.1		141	140	137	134	129	123	116	106	95	82
1-28	1.5		158	157	153	150	145	138	130	119	107	92
1-32	1.5		180	179	175	171	165	158	148	136	122	105
1-36	1.5		203	202	197	192	186	178	167	153	137	118
1-39	2.2		221	219	214	209	202	193	181	166	149	128
1-42	2.2		238	236	230	225	217	208	195	179	160	137
1-46	2.2		260	258	252	246	238	227	213	196	176	151
1-50	2.2		284	282	276	269	260	248	233	214	192	165

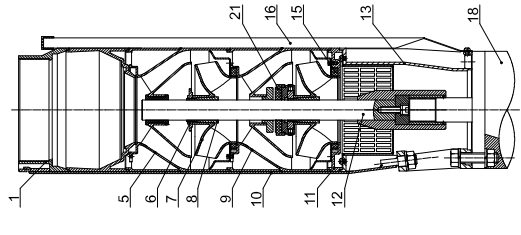
### Performance table PQ3

Model	Motor (kW)	Q (m³/h)	0.8	1.2	1.6	2.0	2.4	2.8	3.0	3.2	3.6	4.0
3-6	0.37	H (m)	36	34	32	30	28	26	24	23	18	13
3-9	0.55		53	51	48	45	42	38	36	33	27	20
3-12	0.75		70	68	64	61	57	52	49	44	37	27
3-15	1.1		87	85	81	77	72	65	61	56	47	34
3-18	1.1		105	103	97	92	87	78	74	68	57	42
3-22	1.5		130	126	120	113	106	96	91	84	70	53
3-27	2.2		159	154	146	138	130	118	111	104	87	66
3-32	2.2		189	183	173	163	154	140	131	122	102	79
3-38	3.0		224	217	205	194	183	168	157	146	122	94
3-43	3.0		254	246	233	220	207	190	178	166	139	107

### Performance table PQ5

Model	Motor (kW)	Q (m³/h)	1.0	2.0	3.0	3.5	4.0	4.5	5.0	5.5	6.0	6.5
5-4	0.37	H (m)	21	20.5	20	19	18	17	15	13	10	8
5-6	0.55		32	31	30	28	27	25	22	19	15	11
5-8	0.75		43	42	40	38	36	33	30	25	20	15
5-12	1.1		66	63	59	57	54	50	45	38	30	23
5-17	1.5		95	91	84	80	76	71	64	54	43	32
5-21	2.2		117	112	104	99	94	87	79	67	53	39
5-25	2.2		139	134	124	118	112	104	94	80	64	47
5-29	3.0		161	155	144	137	130	120	108	92	74	55
5-33	3.0		183	177	163	156	148	137	123	105	84	62
5-38	4.0		211	203	188	178	170	158	142	121	97	71
5-43	4.0		239	230	213	203	193	179	161	137	109	81

### Sectional drawing PQ150



### PQ material list

NO.	Parts	Material
1	Discharge	Stainless Steel AISI304
5	Discharge diffuser	Stainless Steel AISI304
6	Impeller nut	Stainless Steel AISI304
7	Impeller	Stainless Steel AISI304
8	Impeller sleeve	Stainless Steel AISI304
9	Diffuser	Stainless Steel AISI304
10	Strap	Stainless Steel AISI304
11	Inducer	Stainless Steel AISI304
12	Shaft	Stainless Steel AISI304
13	Suction Interconnector	Stainless Steel AISI304
15	Neck ring	PBT/NBR
16	Cable guard	Stainless Steel AISI304
18	Motor	
21	Inlet spacer	Graphite
31	Connection sleeve	Stainless Steel AISI304

Note: Other material also can be customized.

Performance table PQ8

Model	Motor (kW)	Q (m³/h)	2	3	4	5	6	7	8	9	10	11
8-5	0.75		27	26	24	23	22	21	19	17	14	10
8-7	1.1		38	36	34	33	31	29	27	24	20	14
8-10	1.5		54	52	50	47	45	42	39	35	29	21
8-12	2.2		65	62	60	57	54	51	47	42	35	26
8-15	3.0		81	77	74	71	68	64	59	53	44	33
8-18	3.0	H	95	93	89	86	81	77	71	63	53	40
8-21	4.0	(m)	112	108	104	100	95	90	83	74	62	47
8-25	4.0		135	129	124	119	113	108	99	89	74	56
8-30	5.5		162	155	149	143	136	130	119	106	88	67
8-37	5.5		201	191	184	176	167	159	147	131	109	82
8-44	7.5		242	227	218	209	199	190	174	156	129	98
8-50	7.5		272	258	248	238	226	216	198	177	147	111

Performance table PQ12

Model	Motor (kW)	Q (m³/h)	3	4	6	8	10	12	14	16	18
12-5	1.5		34	33	31	29	27	25	22	18	13
12-7	2.2		48	46	43	40	38	35	31	25	19
12-10	3.0		67	65	62	58	55	50	45	36	27
12-13	4.0	H	88	86	81	76	71	66	59	48	36
12-16	5.5	(m)	99	97	93	88	82	76	68	55	41
12-18	5.5		120	118	112	105	99	91	81	66	50
12-21	7.5		138	136	130	123	115	106	95	77	58
12-25	7.5		166	163	155	146	137	126	113	92	69

Performance table PQ17

Model	Motor (kW)	Q (m³/h)	4	6	8	10	12	14	17	20	22
17-1	0.55		10.5	10	9.5	9	8.5	8	6.5	5	4
17-2	1.1		20.5	20	19.5	19	18	16	13.5	10.5	8
17-3	2.2		31	30	29.5	28.5	27	24.5	20.5	16	13
17-4	2.2		41	40	39.5	38	36.5	33.5	28	22	18
17-5	3.0		52	51	50	48	45	42	35	28	23
17-6	4.0		62	61	60	58	55	51	42	34	27
17-7	4.0		73	71	70	67	64	59	49	40	31
17-8	5.5		83	81	80	77	73	67	57	45	36
17-9	5.5		93	91	90	87	82	76	64	52	40
17-10	5.5		103	101	100	97	91	85	72	58	45
17-11	7.5		113	111	109	106	100	94	79	64	50
17-12	7.5	H	123	121	119	115	109	102	87	70	55
17-13	7.5	(m)	133	131	129	125	118	111	95	75	60
17-14	9.2		143	141	139	134	128	119	102	81	65
17-15	9.2		153	151	148	144	137	128	109	87	70
17-16	9.2		163	161	158	154	146	136	116	92	75
17-17	9.2		173	171	167	163	155	145	123	98	79
17-18	11		184	181	177	173	164	154	130	104	84
17-19	11		194	191	187	182	174	162	138	110	89
17-20	11		204	201	197	192	184	171	145	116	94
17-21	13		214	211	207	202	193	180	152	121	99
17-22	13		224	221	217	211	202	188	160	127	104
17-23	13		235	231	227	221	211	198	167	133	109
17-24	13		245	241	236	230	220	205	174	139	113
17-25	15		255	251	246	240	229	213	181	145	118
17-26	15		265	261	256	250	238	222	189	150	122

Performance table PQ30

Model	Motor (kW)	Q (m³/h)	5	8	12	16	20	24	28	30	32	36	38
30-1	1.1		11.5	11	10.5	10	9.5	9	8	7.5	7	5.5	4.5
30-2	2.2		22.5	22	21	20	19	17.5	16	15	14	10.5	9
30-3	3.0		33.5	33	32	30	28	26	24	22	20	16	14
30-4	4.0		44.5	44	42	40	37	35	32	29	27	21	18
30-5	5.5		55.5	55	53	50	47	44	40	37	34	27	23
30-6	5.5		67	66	63	60	56	52	48	44	41	32	27
30-7	7.5		77	76	74	70	65	61	55	52	48	37	32
30-8	7.5		89	87	84	80	75	70	63	59	54	43	36
30-9	9.2		101	98	95	90	84	78	71	66	61	48	41
30-10	9.2		112	109	105	100	93	87	79	74	68	53	45
30-11	9.2		123	120	116	110	103	96	87	81	75	59	50
30-12	11		134	131	126	120	112	105	95	88	82	64	54
30-13	11	H	145	142	137	129	121	113	103	96	88	69	59
30-14	13	(m)	157	153	147	139	130	122	111	103	95	74	63
30-15	13		168	164	158	149	140	131	119	110	102	80	68
30-16	15		180	175	168	159	149	140	127	118	109	85	72
30-17	15		190	186	179	169	158	148	135	125	116	90	77
30-18	18.5		201	197	189	179	168	157	143	132	122	96	81
30-19	18.5		212	207	200	189	177	166	150	140	129	101	86
30-20	18.5		223	218	210	199	186	174	158	147	136	106	90
30-21	18.5		235	229	221	209	196	183	166	155	143	112	95
30-22	22		246	240	231	219	205	192	174	162	150	117	99
30-23	22		258	251	242	229	214	201	182	169	156	122	104
30-24	22		269	262	252	239	224	209	190	177	163	128	108
30-25	22		281	273	263	249	233	218	198	184	170	133	113

Performance table PQ42

Model	Motor (kW)	Q (m³/h)	5	10	20	30	40	50	60
42-1	2.2		13	12.5	12	10.5	9	8.5	7
42-2	3.0		26	25.5	24	21.5	18.5	17	14.5
42-3	5.5		40	38.5	36	32.5	28	26.5	22
42-4	7.5		53	52	49	43	37	36	29
42-5	7.5		66	65	61	54	47	45	38
42-6	9.2		79	78	74	66	57	54	45
42-7	11		92	91	86	77	66	63	52
42-8	13		105	104	98	87	75	72	58
42-9	15		118	117	110	97	84	80	65
42-10	15		132	130	122	108	93	89	72
42-11	18.5		144	142	134	119	103	98	79
42-12	18.5	H	157	155	146	130	112	107	87
42-13	22	(m)	170	168	158	141	122	116	94
42-14	22		183	181	170	152	131	125	102
42-15	22		196	194	182	163	140	134	109
42-16	25		209	207	194	174	150	143	116
42-17	25		222	220	206	184	159	152	123
42-18	30		235	233	218	195	168	161	131
42-19	30		248	246	231	206	178	170	138
42-20	30		261	259	243	217	187	179	145
42-21	37		274	271	255	228	196	188	152
42-22	37		287	283	267	238	205	197	160

## Performance table PQ60

Model	Motor (kW)	Q (m³/h)	20	30	40	50	60	70	75
60-1	2.2		12	10.5	8.5	7	6	4	-
60-2-2	3.0		20	18	15.5	13	10.5	6.5	4
60-2	4.0		24.5	22	19	16.5	12.5	9	6
60-3	5.5		37	34	29	25	20	14	10
60-4	7.5		51	46	40	35	29	21	17
60-5	9.2		65	59	51	45	37	28	21
60-6	11		79	72	62	54	45	34	26
60-7	13		92	84	73	63	53	39	30
60-8-2	13		99	89	78	67	56	41	31
60-8	15		105	96	84	73	61	45	35
60-9-2	15		112	102	89	77	64	47	36
60-9	18.5		121	110	96	85	69	52	40
60-10	18.5	H	132	121	106	93	77	58	45
60-11	22		145	133	117	102	85	64	50
60-12	22		158	145	127	110	93	70	54
60-13	25		172	157	139	120	100	75	59
60-14	25		185	168	148	128	106	80	63
60-15	30		198	180	159	138	114	85	68
60-16	30		212	192	170	147	122	91	72
60-17	30		224	204	181	157	130	98	77
60-18	37		240	219	194	168	140	105	84
60-19	37		253	231	204	178	148	112	89
60-20	37		265	242	214	186	155	118	94
60-21	37		278	255	226	196	163	123	98

## Performance table PQ75

Model	Motor (kW)	Q (m³/h)	30	40	50	60	70	75	80	90	100
75-1	4		18	17	15.5	14.5	13	12	11	9	5.5
75-2	7.5		36.5	34.5	32	30	27	25	23	19	12.5
75-3	11		54.5	52.5	49	45	41	38	35.5	29	21.5
75-4	15		73.5	71	66.5	61	55.5	52	48	40	30
75-5	18.5		92	89	83	76	70	65	60.5	51	38
75-6	22		111	107	100	91	84	79	73	62	47
75-7	30		130	125	118	107	98	93	87	73	56
75-8	30		148	143	135	124	113	107	101	85	65
75-9	37		167	161	152	140	128	121	114	96	74
75-10	37		185	178	169	157	143	135	127	107	83
75-11	45		203	196	185	172	158	148	139	118	92
75-12	45	H	222	214	202	188	172	162	152	129	100
75-13	55		241	232	220	204	186	175	164	139	108
75-14	55		262	251	238	220	200	188	176	149	116
75-15	63		303	291	274	253	229	215	202	169	133
75-16	63		323	310	292	270	245	229	215	179	142
75-17	75		342	329	309	286	259	243	228	190	150
75-18	75		361	347	327	302	274	257	241	201	158
75-19	75		381	366	345	318	288	271	254	212	167
75-20	75		381	366	345	318	288	271	254	212	167

## Performance table PQ95

Model	Motor (kW)	Q (m³/h)	40	50	60	70	80	90	95	100	110	120
95-1	4		17.5	16.5	15.5	14	12.5	10.5	9.5	8	5	-
95-2	9.2		36	34	32	28.5	26	21.5	20	17	12	3.5
95-3	13		54	52	48.5	44.5	40	33	30	26	19	6
95-4	18.5		72	70	65	60	54	45	41	36	25.5	10.5
95-5	22		91	87	81.5	75	68	57	51.5	46	32	14.5
95-6	25		110	104	98	90	81	69	62	55	38	18
95-7	30		129	122	115	105	94	81	73	65	45	22
95-8	37		148	141	131	120	108	93	84	75	52	26
95-9	37	H	167	159	148	135	122	105	95	85	59	31
95-10	45	(m)	186	177	165	151	136	117	106	95	67	36
95-11	45		205	195	182	167	150	130	117	105	75	42
95-12	55		224	213	199	183	165	143	129	116	84	48
95-13	55		243	231	216	199	180	156	141	127	93	53
95-14	55		262	249	233	215	195	169	153	138	102	59
95-15	63		281	268	250	231	210	183	166	149	111	64
95-16	63		301	286	267	247	225	197	178	160	119	70
95-17	75		321	304	284	263	240	210	190	171	127	75
95-18	75		342	323	302	279	255	222	202	182	135	81

## Performance table PQ120

Model	Motor (kW)	Q (m³/h)	60	70	80	90	100	110	120	130	140	150
120-1	11		22.5	22	21.5	21	20.5	20	19	18.5	17.5	16.5
120-2-2	15		33.5	33	32	30	29	28.5	27.5	26.5	24.5	24
120-2-1	18.5		40.5	40	38.5	37.5	36	35.5	33.5	32.5	28.5	28
120-2	22		45.5	44.5	43.5	42.5	41.5	40.5	39	38	36	34
120-3-2	25		55	54.5	52.5	51	49.5	48.5	46.5	45	42.5	40.5
120-3-1	30		62.5	61.5	60	58	56	54	53.5	51	48.5	46
120-3	30		68	67	65.5	64	62	61	59	57	54	51
120-4-2	37		78.5	77	75	72.5	70.5	69	66.5	65	60.5	57.5
120-4-1	37		85	84	82	79.5	77	76	73.5	71	67	64
120-4	37		90.5	89.5	87.5	85.5	83	81.5	78.5	76	72	68
120-5-2	45		102	100.5	97.5	95	91.5	90	86.5	84	79	74.5
120-5-1	45		108.5	106.5	103.5	101	98.5	96.5	94	91	86.5	82
120-5	55		113.5	112	109.5	106.5	103.5	101.5	98.5	95	90	85
120-6-2	55		125	122.5	119	116.5	112.5	109	104.5	101.5	96	90.5
120-6-1	55		131	129.5	126.5	123.5	120	117	113	109	103	98
120-6	63		136	134.5	131	127.5	124.5	121.5	118	114	108	102
120-7-2	63	H	147	144	140.5	136.5	132.5	128	123	119	113	106
120-7-1	63	(m)	153	150	146.5	142.5	138.5	135	130	125.5	120	112.5
120-7	75		159	156.5	153	149	145	142	138	133	126	119.5
120-8-2	75		170	167	164.5	158	153	148.5	143	138	131.5	123
120-8-1	75		175.5	173	168.5	163.5	159	155.5	150	145	138	129.5
120-8	75		181.5	179.5	175	170.5	166	163	157.5	152.5	144	136.5
120-9-2	90		192.5	189	184	179.5	174	168.5	162.5	157	149.5	140
120-9-1	90		198	195	190.5	185	180	175.5	169.5	164	156	147
120-9	90		204	201.5	196	191.5	186.5	182.5	177.5	171.5	162	153.5
120-10-2	90		215.5	211	206	200.5	194.5	188.5	182.5	176.5	167.5	157.5
120-10-1	90		221	217	212	206.5	200.5	195.5	189.5	183	174	164
120-10	110		227	223.5	219	213	207.5	202.5	197	190.5	180	170.5
120-11-2	110		238	233	228	222	215.5	208	202	195.5	185.5	174.5
120-11-1	110		243.5	239.5	234	227.5	221.5	215	209	202	192	181
120-11	110		250	245.5	241	234.5	228	222.5	216.5	209.5	198.5	187.5

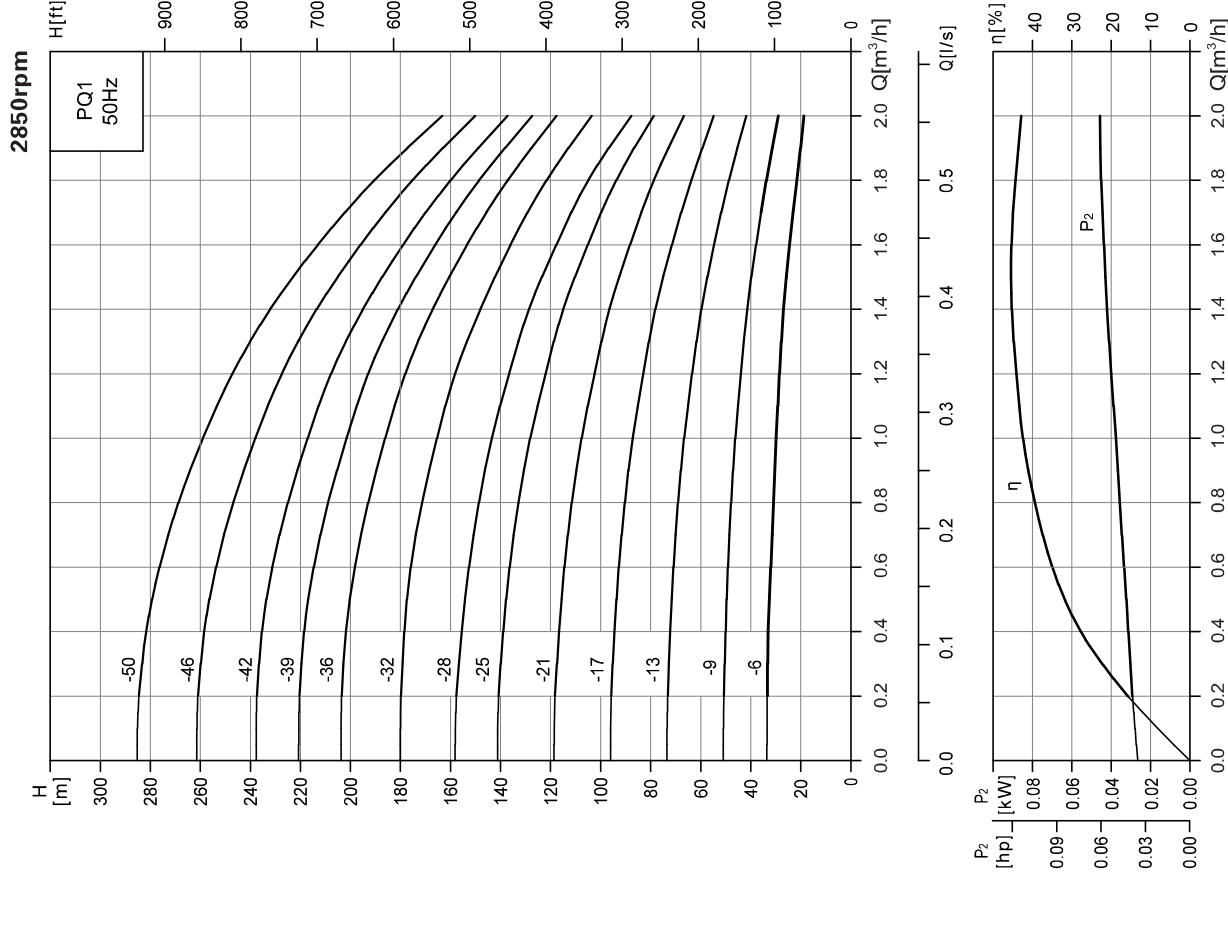
Performance table PQ150

Model	Motor (kW)	Q (m³/h)	80	90	100	110	120	130	140	150	160	170	180	
150-1-1	9.2	H (m)	18.5	18	17.5	17	16.5	16	15	14.5	13.5	13	11.5	
150-1	13		24	23.5	23	22.5	22	21.5	21	20	19.5	19	18	
150-2-2	18.5		35.5	34	32	31.5	31	29.5	29	28.5	28	27	25	
150-2-1	22		43	41.5	40	39	38.5	38	37.5	36	35.5	34	31	
150-2	25		48.5	47.5	46	45	44.5	44	42.5	41	39.5	38	36	
150-3-2	30		60	57	54.5	54	53.5	53	52.5	49.5	46.5	44.5	43	
150-3-1	37		66.5	64	62.5	61.5	60.5	60	59.5	56.5	54	51.5	49	
150-3	37		74.5	72.5	70.5	69.5	68	67.5	67.5	65.5	63.5	60	57.5	54.5
150-4-2	45		85.5	83	80	79	77.5	77	76	73	66.5	63.5	61	
150-4-1	45		93	90	87.5	86.5	84.5	83.5	83	79.5	73.5	70.5	67	
150-4	55		100.5	98	96	94.5	93	92.5	89.5	86.5	80.5	77.5	73	
150-5-2	55		111.5	107	104	103	102	101	98	94	86.5	81.5	78.5	
150-5-1	55		118.5	114.5	112	110.5	108.5	107	105.5	101	94	89.5	85	
150-5	63		126	122.5	120	118	116	115	112.5	108.5	101.5	97	91.5	
150-6-2	63		137	131.5	128	126.5	123	122	120.5	115.5	107	101	97	
150-6-1	75	144	139	136	134	132	131.5	128	122.5	114.5	109	103.5		
150-6	75	151.5	147	144	141.5	139.5	138	135	130	122	116.5	110		
150-7-2	75	162.5	156	152.5	150.5	146	145	143	138	128	121	115		
150-7-1	90	169.5	163.5	160.5	158	155	153	150.5	145	135.5	129	121.5		
150-7	90	177	171.5	168.5	165.5	163.5	162.5	157.5	152.5	143	136.5	128		
150-8-2	90	188	180.5	177	174.5	172	171	165.5	160.5	149	140.5	133.5		
150-8-1	110	195	188	185	182	180	178.5	173	168.5	156.5	148.5	140		
150-8	110	202.5	196	193	189.5	187	186	180	175	164	156	146.5		
150-9-2	110	213.5	205	201.5	198	196	194	188.5	182.5	170.5	160	152		
150-9-1	110	220.5	212.5	209.5	205.5	203	201.5	196	189.5	178	168	158.5		
150-9	110	228	220.5	217.5	213	210	209	203	197	185.5	175.5	165		

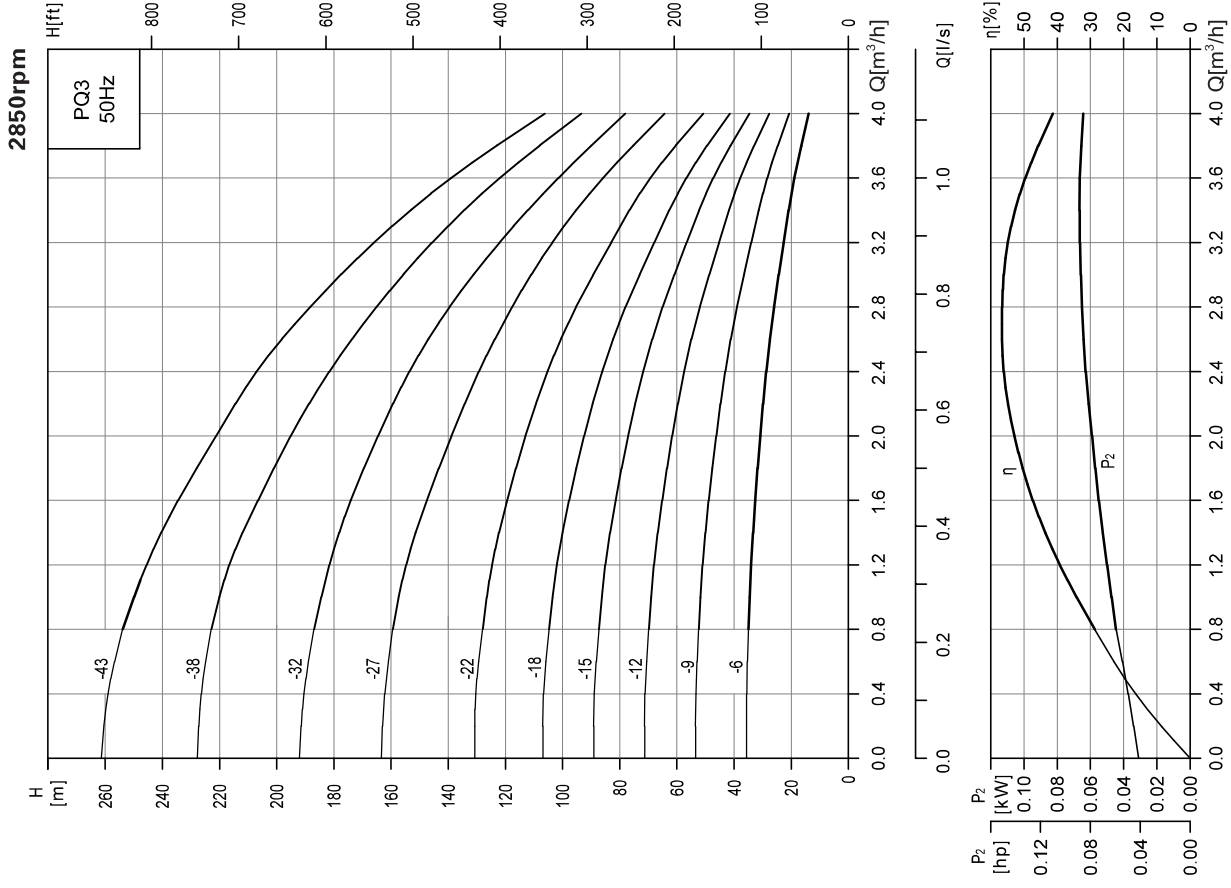
Performance table PQ200

Model	Motor (kW)	Q (m³/h)	100	120	140	160	180	200	220	240
200-1	30	H (m)	37	36.5	36	35	34	33	31.5	29
200-2-2B	37		51	49	47	45.5	42.5	39.5	35.5	31
200-2-2A	45		57.5	56	54	52	50.5	47.5	43	39
200-2-A	55		66.5	65.5	63.5	62	60	57	53.5	49.5
200-2	55		76	75	73.5	71.5	69	66.5	64	59.5
200-3-2B	75		88.5	87	84	81	78	72.5	68.5	63
200-3-A-B	75		92	90	87	84	80.5	76.5	71	65
200-3-2A	75		96	94	91.5	88.5	86	81	76	69.5
200-3-B	75		101	99	96.5	94	90	86	81.5	75
200-3-A	75		104.5	102.5	100	97	94	90	85	79
200-3	90		113.5	112	110	107	103.5	99.5	95.5	89
200-4-2B	90		127	124.5	121.5	117	111.5	106.5	100	91
200-4-2A	110		134	131.5	127.5	124	120	114	107	99
200-4-A	110		143	140.5	138	133.5	129.5	124	118	109.5
200-4	110		152	150	147.5	143	138.5	133.5	127	117

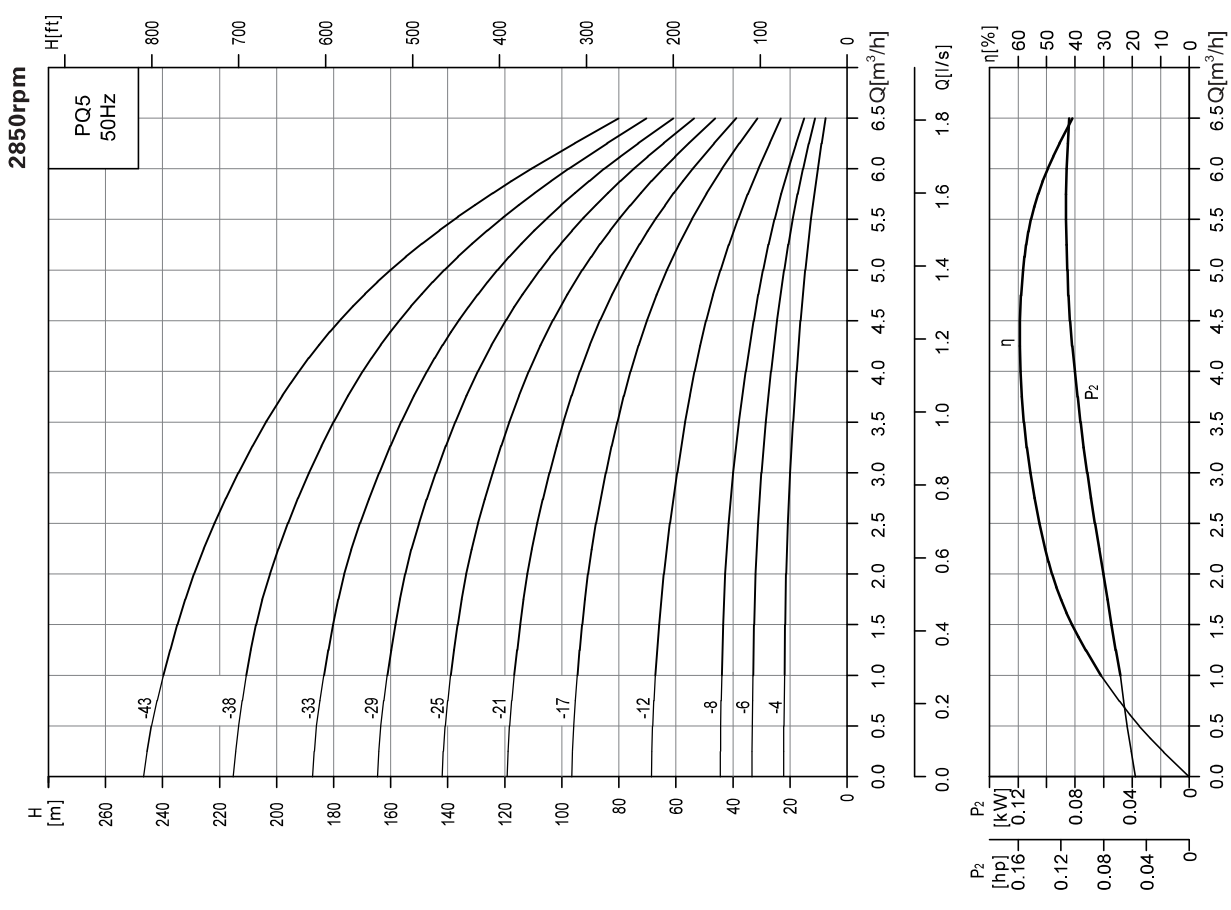
Performance curve



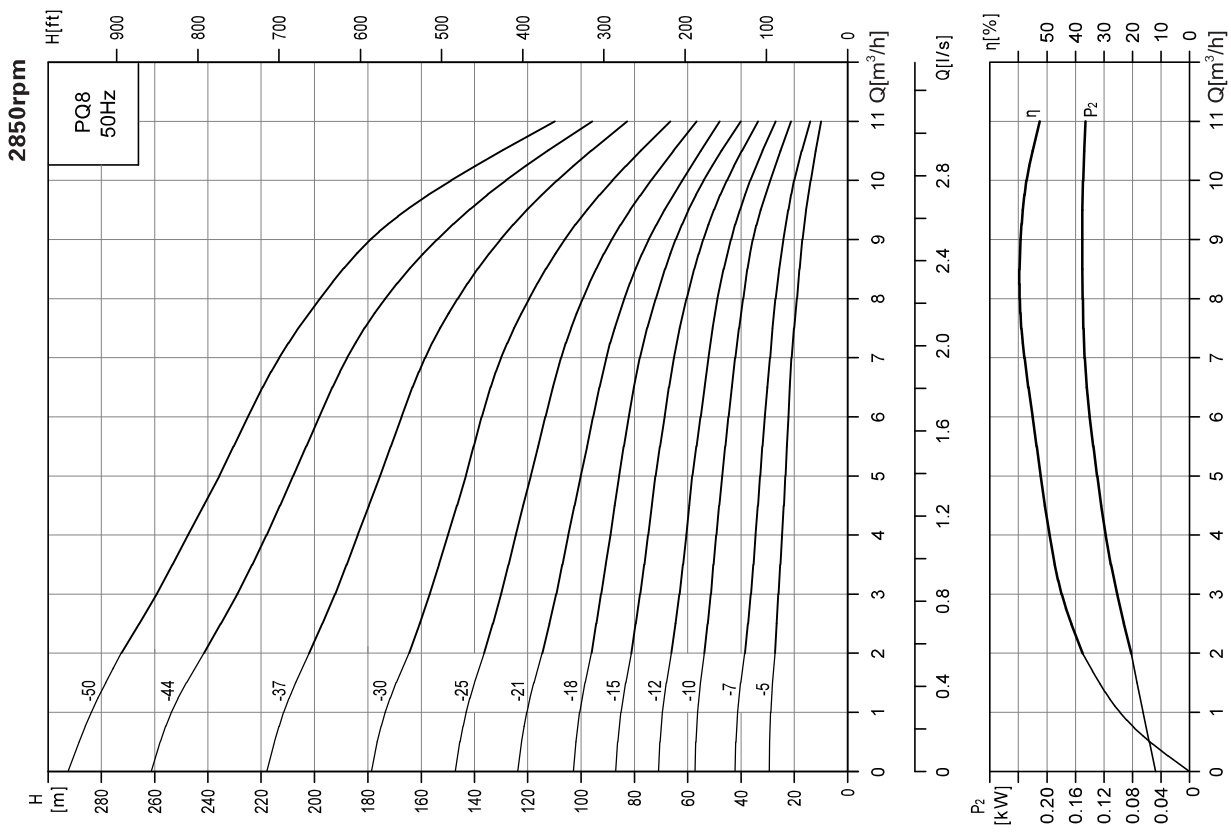
### Performance curve



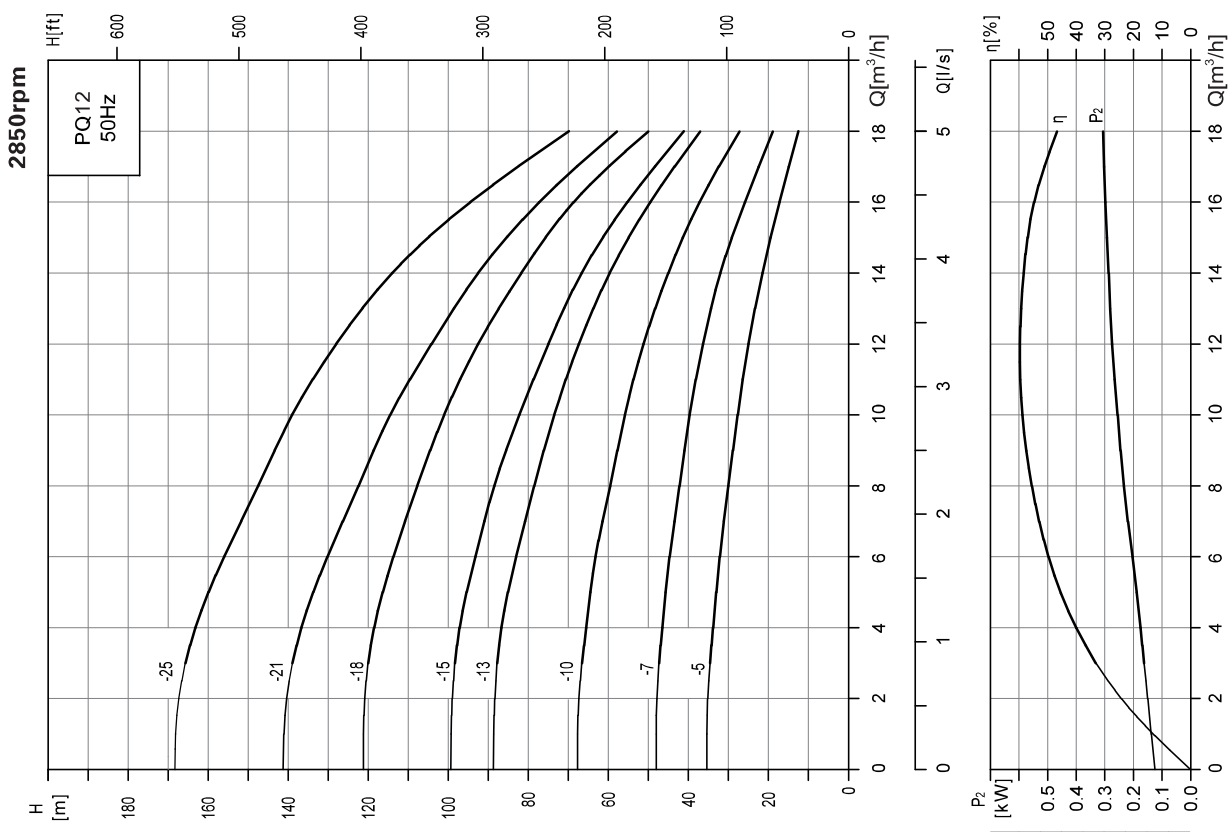
### Performance curve



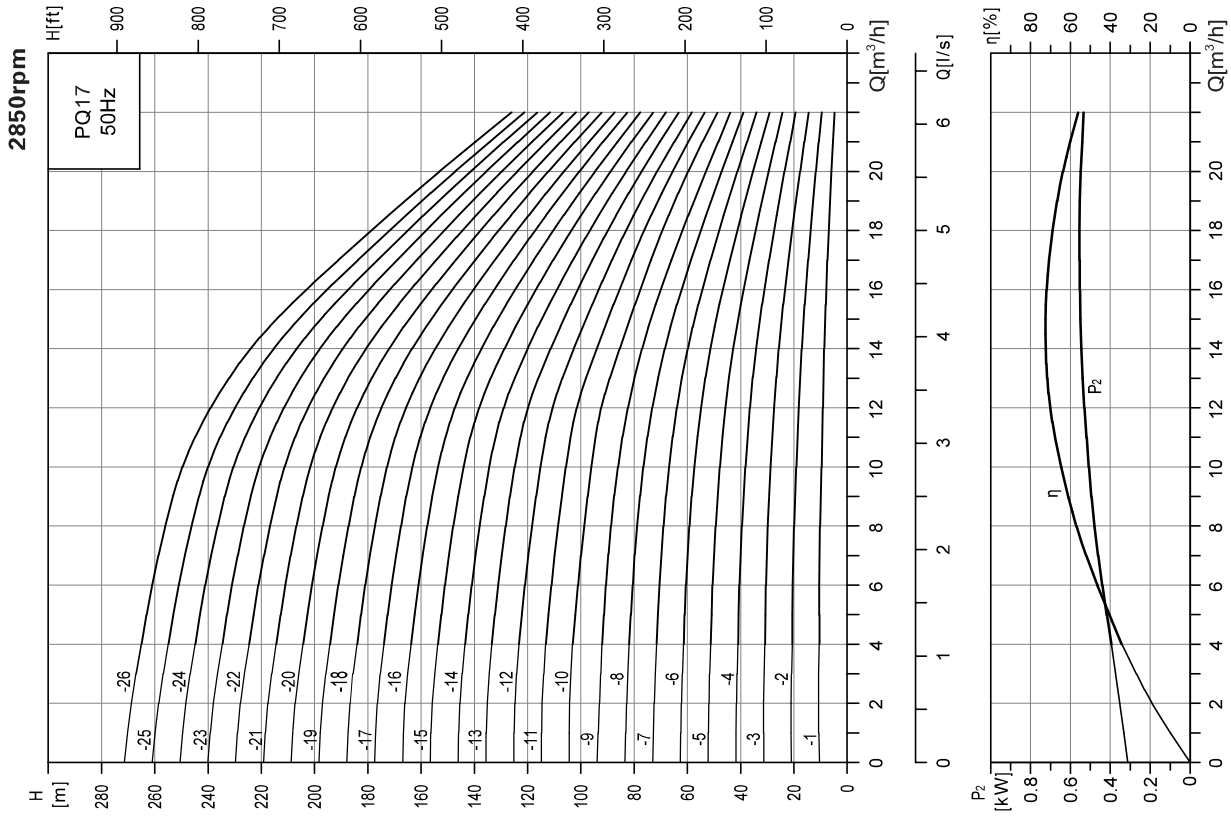
### Performance curve



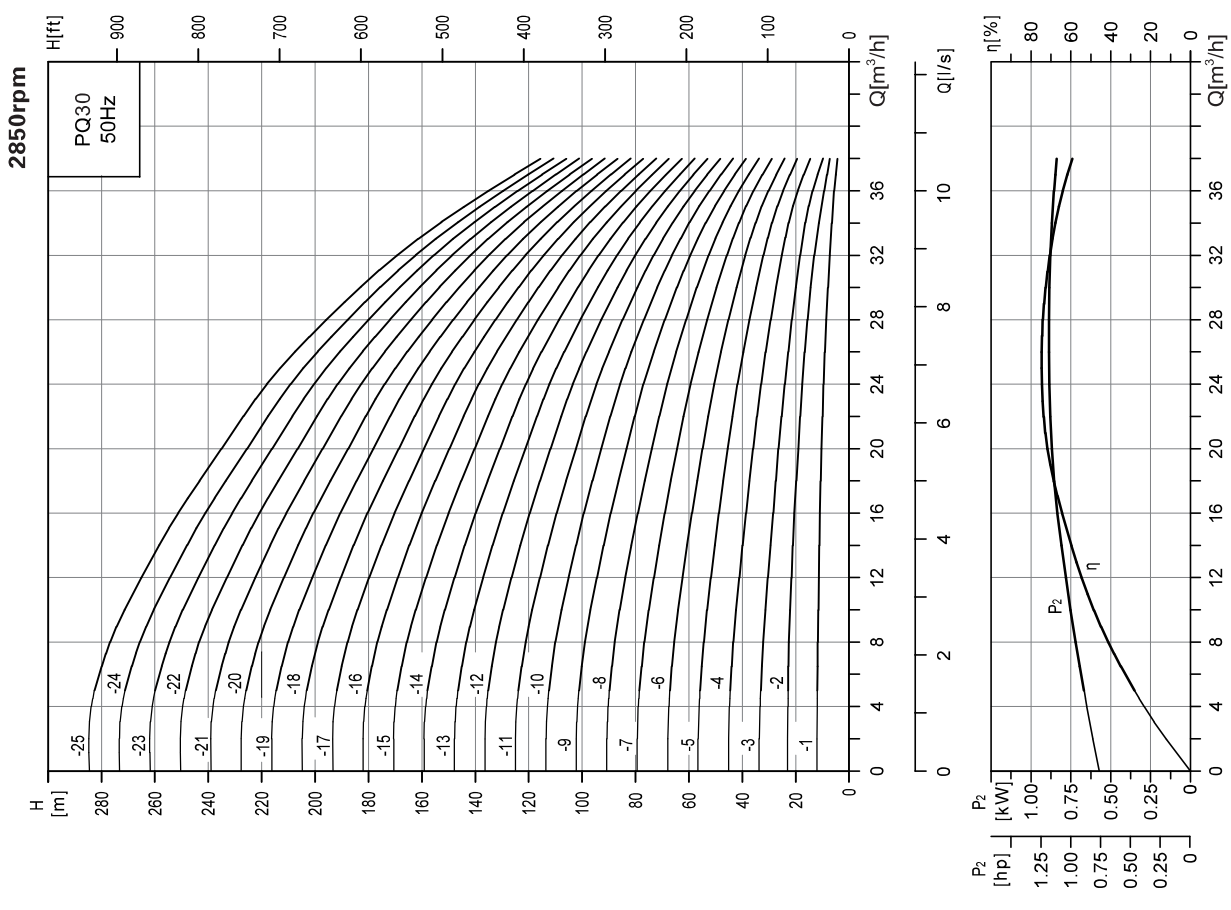
### Performance curve



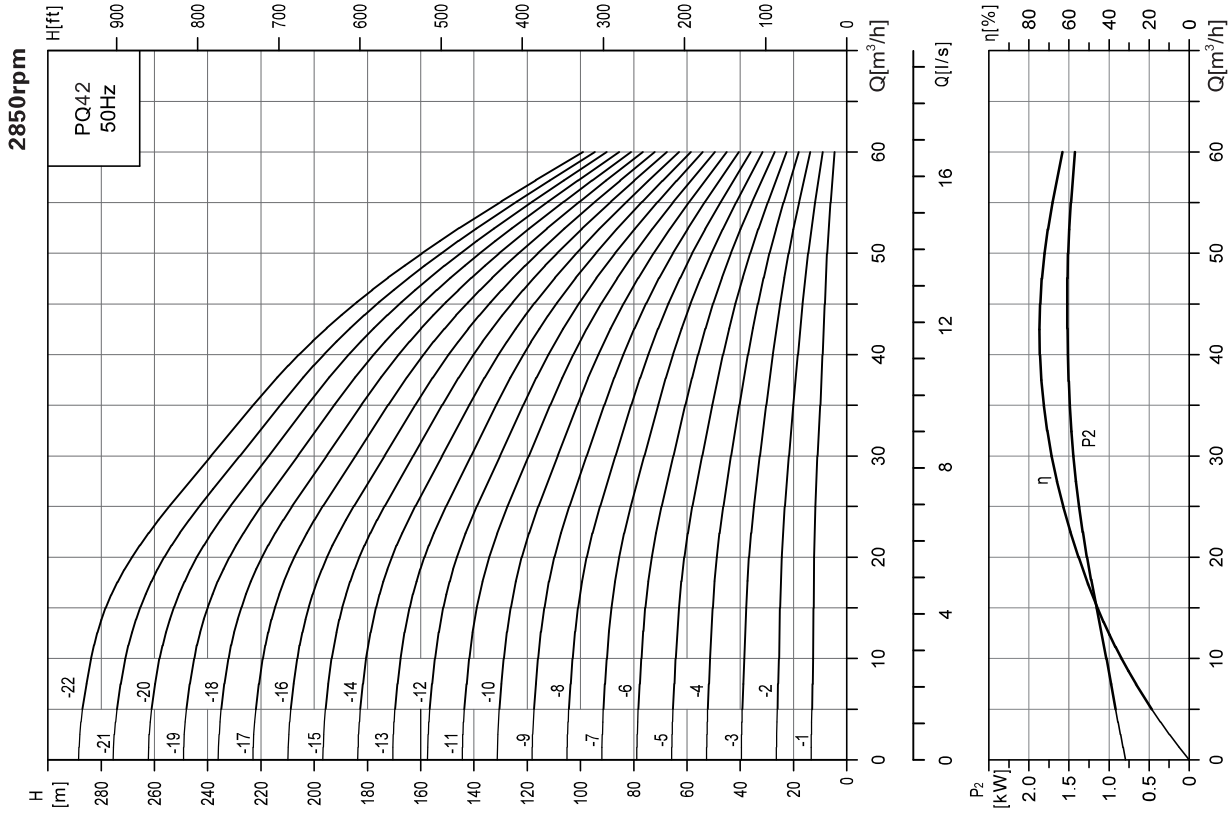
### Performance curve



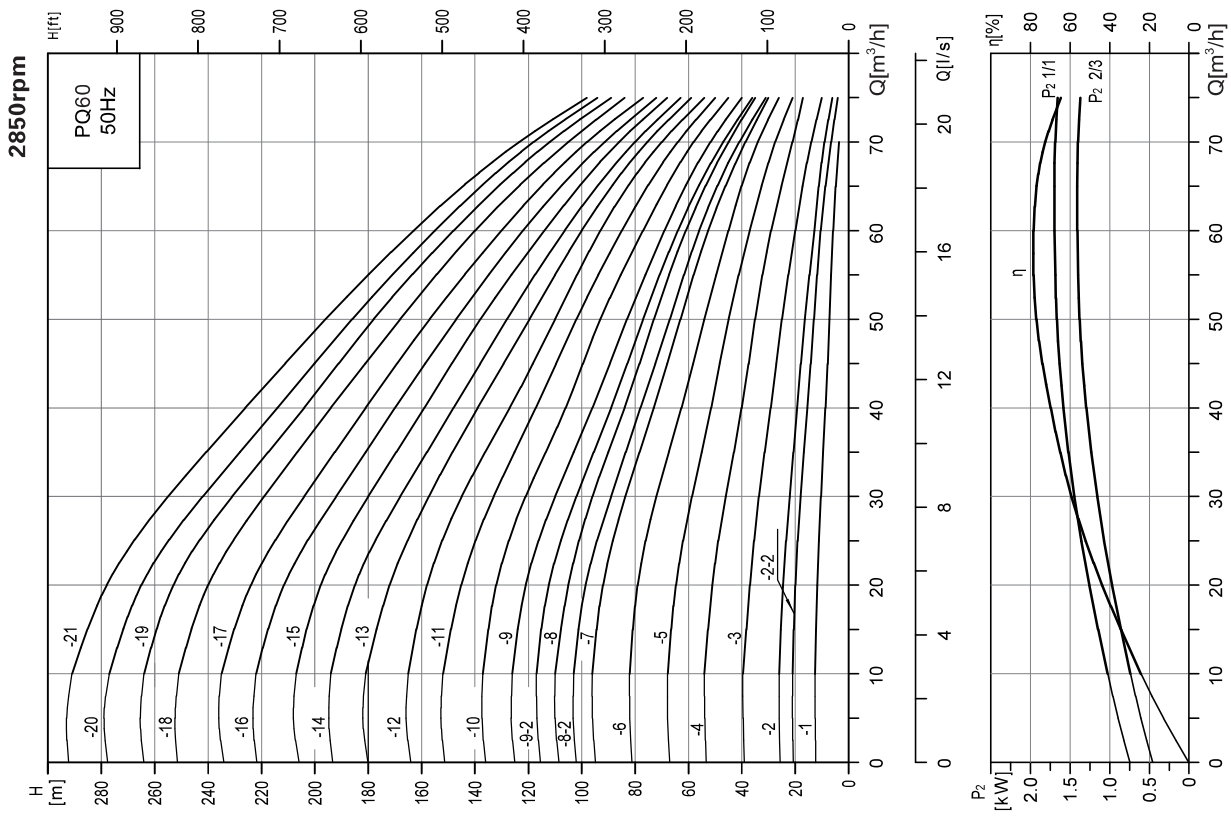
### Performance curve



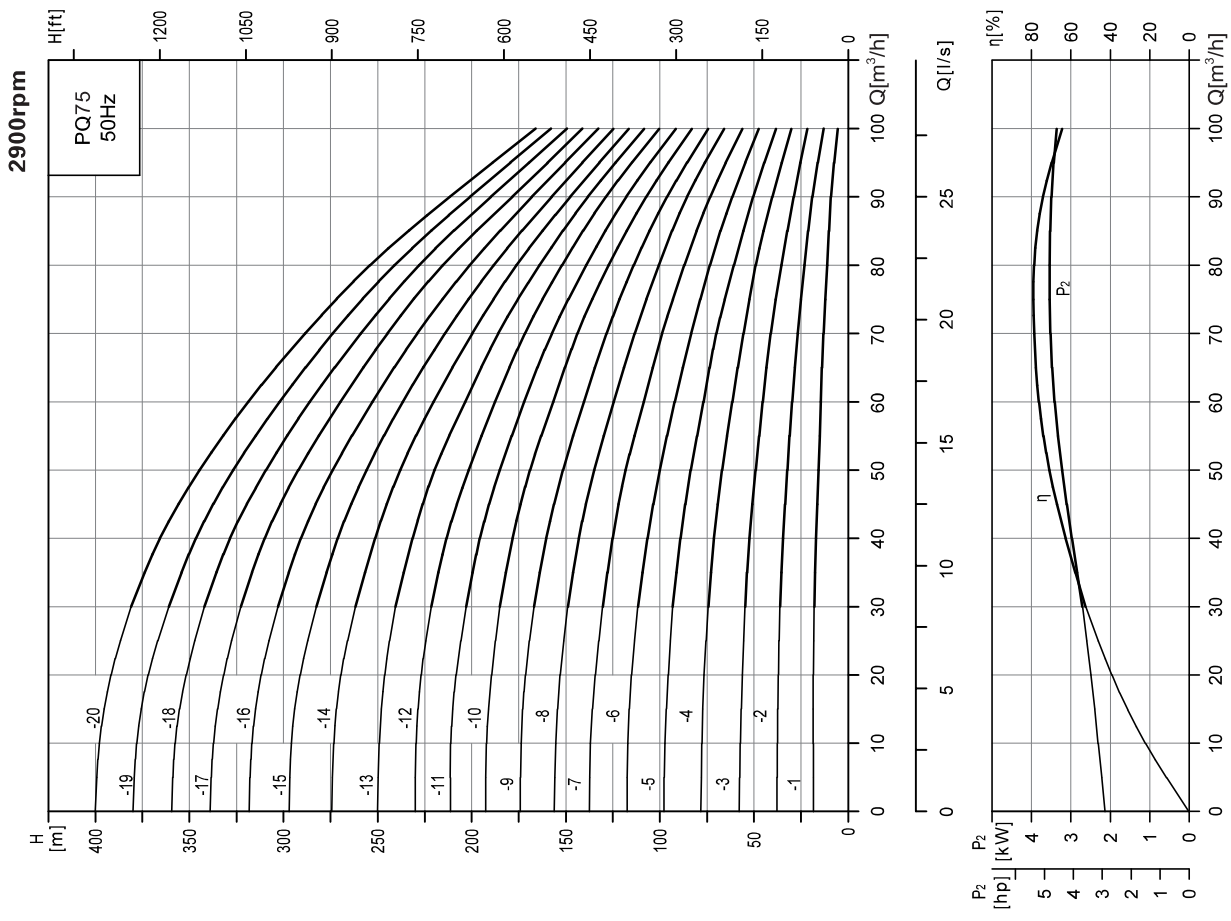
### Performance curve



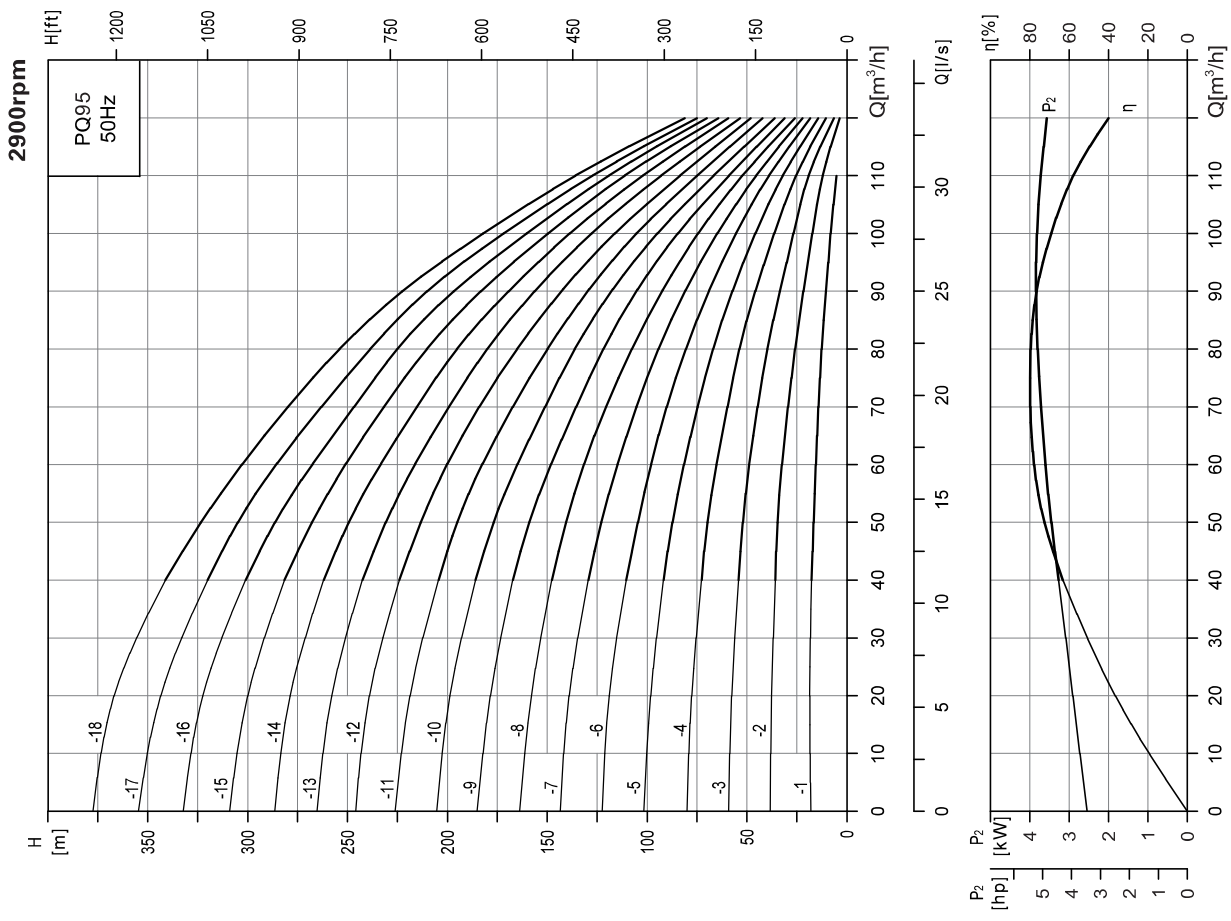
### Performance curve



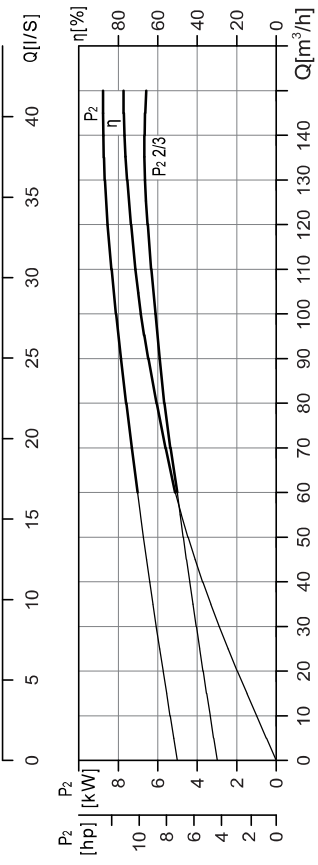
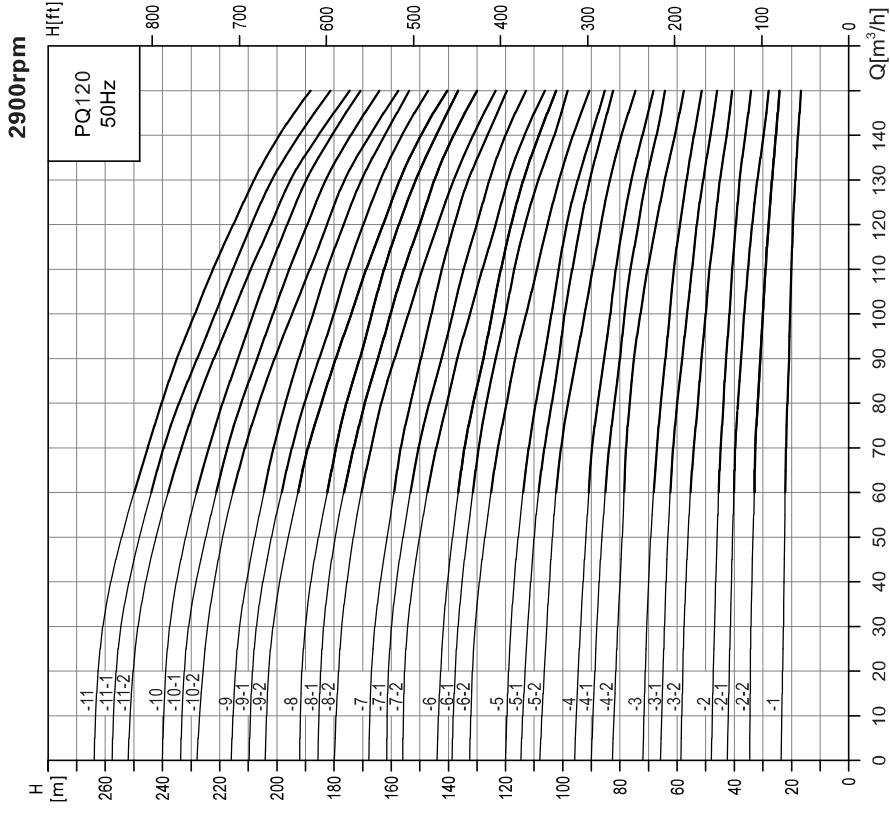
### Performance curve



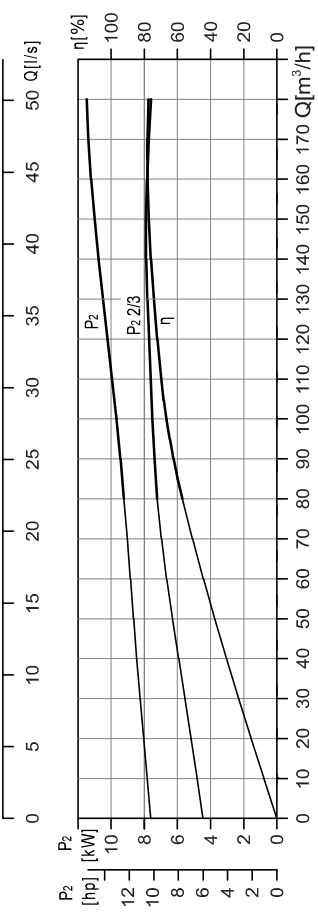
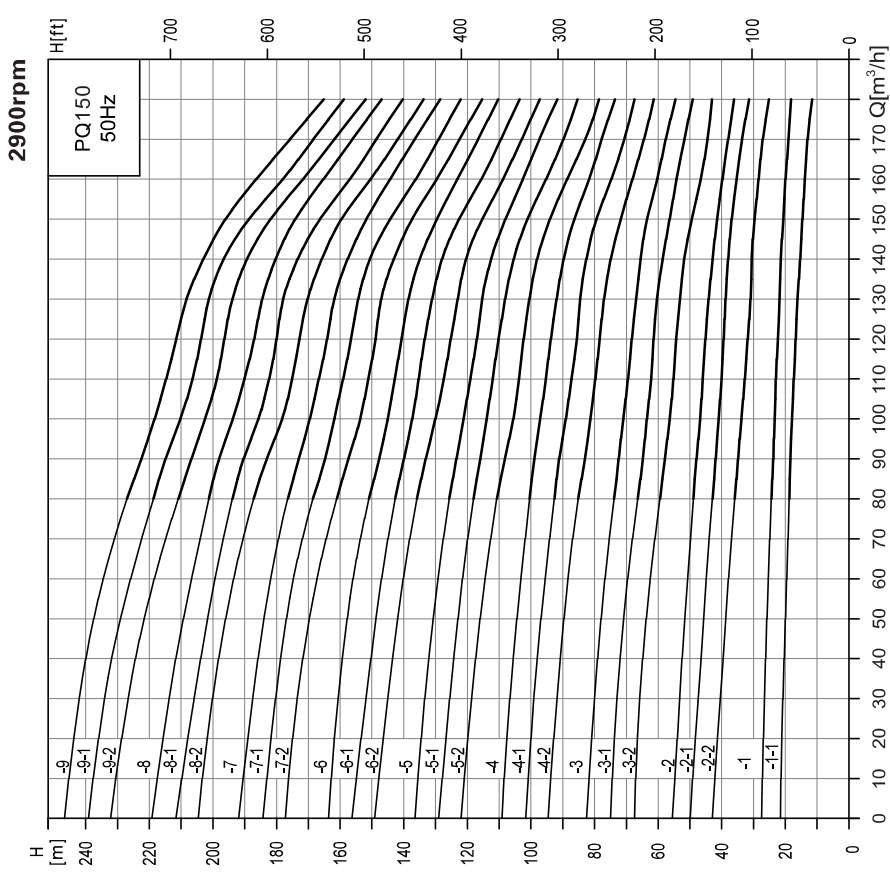
### Performance curve



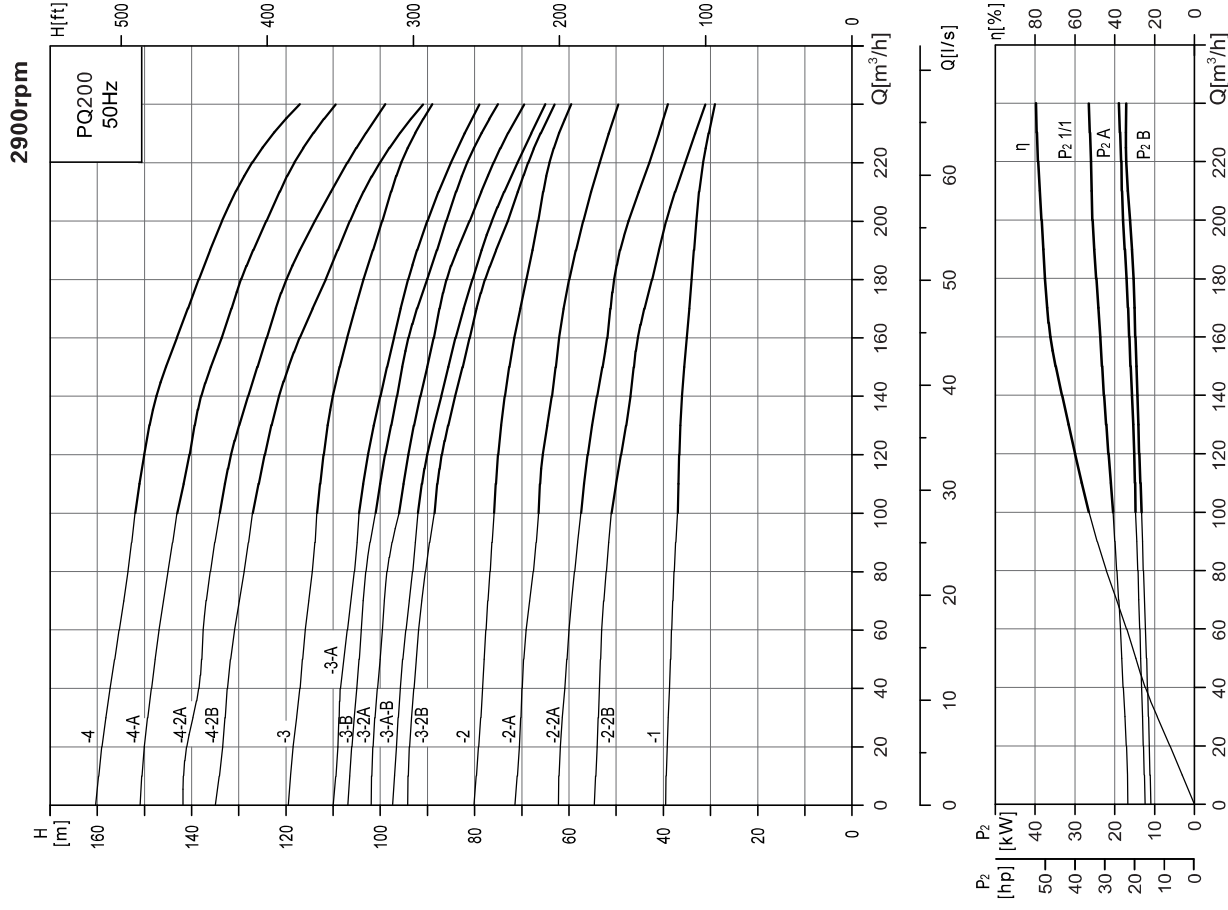
### Performance curve



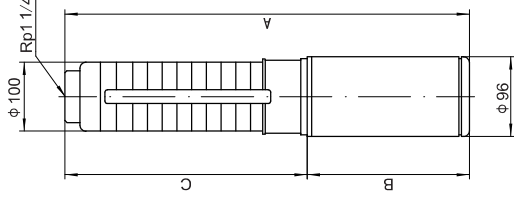
### Performance curve



## Performance curve



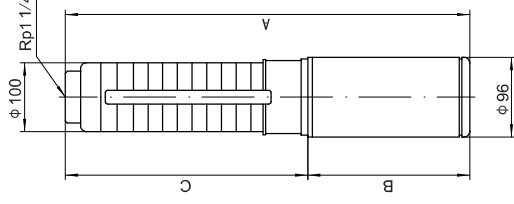
## PQ1 Installation dimension



## Dimension and weight

Model	Dimension (mm)(with 4" motor)			Weight (kg)
	A	B	C	
PQ1-6	647	350	297	12
PQ1-9	710	350	360	13
PQ1-13	808	364	444	15
PQ1-17	912	384	528	17
PQ1-21	1023	411	612	19
PQ1-25	1107	411	696	20
PQ1-28	1187	428	759	23
PQ1-32	1271	428	843	24
PQ1-36	1355	428	927	25
PQ1-39	1457	467	990	29
PQ1-42	1520	467	1053	30
PQ1-46	1604	467	1137	31
PQ1-50	1688	467	1221	32

## PQ3 Installation dimension

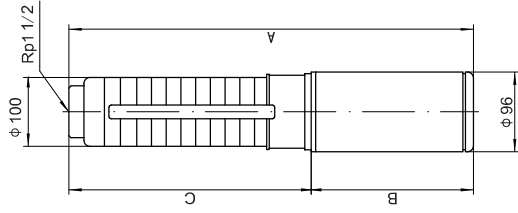


## Dimension and weight

Model	Dimension (mm)(with 4" motor)			Weight (kg)
	A	B	C	
PQ3-6	647	350	297	12
PQ3-9	724	364	360	13
PQ3-12	807	384	423	16
PQ3-15	897	411	486	18
PQ3-18	960	411	549	19
PQ3-22	1061	428	633	22
PQ3-27	1205	467	738	27
PQ3-32	1310	467	843	28
PQ3-38	1491	522	969	31
PQ3-43	1596	522	1074	32

Note: Dimension B is different according to different configurations.

## PQ5 Installation dimension

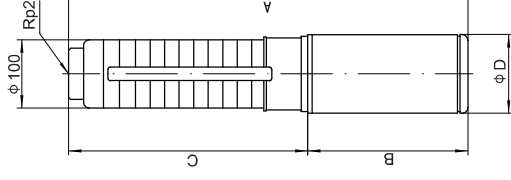


## Dimension and weight

Model	Dimension (mm)(with 4" motor)			Weight (kg)
	A	B	C	
PQ5-4	605	350	255	12
PQ5-6	661	364	297	13
PQ5-8	723	384	339	15
PQ5-12	834	411	423	17
PQ5-17	956	428	528	21
PQ5-21	1079	467	612	26
PQ5-25	1163	467	696	27
PQ5-29	1302	522	780	29
PQ5-33	1386	522	864	30
PQ5-38	1556	587	969	33
PQ5-43	1661	587	1074	35

Note: Dimension B is different according to different configurations.

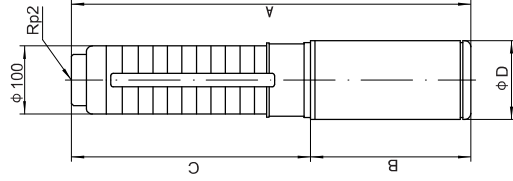
## PQ12 Installation dimension



## Dimension and weight

Model	Dimension (mm)(with 4/6" motor)				Weight (kg)
	A	B	C	phi D	
PQ12-5	963/-	428/-	535	96/-	21/-
PQ12-7	1132/-	467/-	665	96/-	26/-
PQ12-10	1382/-	522/-	860	96/-	30/-
PQ12-13	1642/1688	587/633	1055	96/137	34/40
PQ12-15	1872/1852	687/667	1185	96/137	38/46
PQ12-18	2067/2047	687/667	1380	96/137	40/48
PQ12-21	2343/2273	768/698	1575	96/137	47/58
PQ12-25	2603/2533	768/698	1835	96/137	50/61

## PQ8 Installation dimension

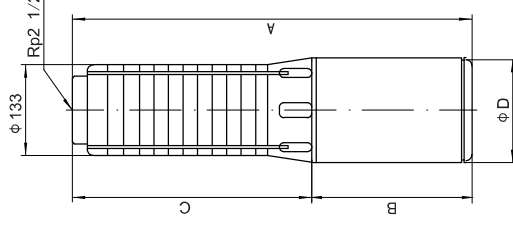


## Dimension and weight

Model	Dimension (mm)(with 4/6" motor)				Weight (kg)
	A	B	C	phi D	
PQ8-5	837/-	384/-	453	96/-	16/-
PQ8-7	948/-	411/-	537	96/-	19/-
PQ8-10	1091/-	428/-	663	96/-	22/-
PQ8-12	1214/-	467/-	747	96/-	27/-
PQ8-15	1340/-	467/-	873	96/-	29/-
PQ8-18	1521/-	522/-	999	96/-	32/-
PQ8-21	1712/1758	587/633	1125	96/137	35/41
PQ8-25	1880/1926	587/633	1293	96/137	37/43
PQ8-30	2190/2170	687/667	1503	96/137	43/51
PQ8-37	2484/2464	687/667	1797	96/137	46/54
PQ8-44	2859/2789	768/698	2091	96/137	55/66
PQ8-50	3111/3041	768/698	2343	96/137	58/69

Note: Dimension B is different according to different configurations.

## PQ17 Installation dimension

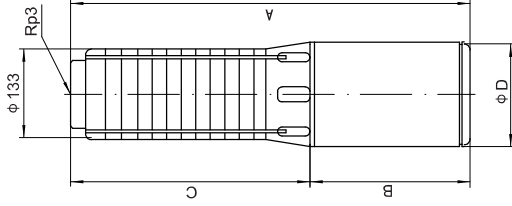


## Dimension and weight

Model	Dimension (mm)(with 4/6" motor)				Weight (kg)
	A	B	C	phi D	
PQ17-1	692/-	364/-	328	96/-	17/-
PQ17-2	799/-	411/-	388	96/-	21/-
PQ17-3	916/-	467/-	449	96/-	28/-
PQ17-4	976/-	467/-	509	96/-	29/-
PQ17-5	1092/-	522/-	570	96/-	32/-
PQ17-6	1217/1263	587/633	630	96/137	35/41
PQ17-7	1278/1324	587/633	691	96/137	36/42
PQ17-8	1438/1418	687/667	751	96/137	41/49
PQ17-9	1499/1479	687/667	812	96/137	42/50
PQ17-10	1559/1529	687/667	872	96/137	43/51
PQ17-11	1701/1631	768/698	933	96/137	49/60
PQ17-12	1761/1691	768/698	993	96/137	50/61
PQ17-13	1822/1752	768/698	1054	96/137	51/62
PQ17-14	-/1861	-/731	1130	-/137	-/75
PQ17-15	-/1922	-/731	1191	-/137	-/76
PQ17-16	-/1982	-/731	1251	-/137	-/77
PQ17-17	-/2043	-/731	1312	-/137	-/78
PQ17-18	-/2198	-/826	1372	-/137	-/85
PQ17-19	-/2259	-/826	1433	-/137	-/86
PQ17-20	-/2319	-/826	1493	-/137	-/87
PQ17-21	-/2448	-/894	1554	-/137	-/95
PQ17-22	-/2508	-/894	1614	-/137	-/96
PQ17-23	-/2569	-/894	1675	-/137	-/98
PQ17-24	-/2629	-/894	1735	-/137	-/99
PQ17-25	-/2690	-/894	1796	-/137	-/106
PQ17-26	-/2750	-/894	1856	-/137	-/107

Note: Dimension B is different according to different configurations.

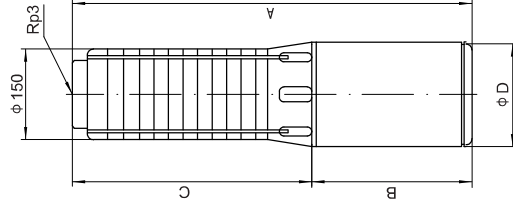
## PQ30 Installation dimension



## Dimension and weight

Model	Dimension (mm)(with 4/6" motor)				Weight (kg)
	A	B	C	$\phi D$	
PQ30-1	773/-	411/-	362	96/-	20/-
PQ30-2	925/-	467/-	458	96/-	28/-
PQ30-3	1076/-	522/-	554	96/-	31/-
PQ30-4	1237/1283	587/633	650	96/137	35/41
PQ30-5	1433/1413	687/667	746	96/137	40/48
PQ30-6	1529/1509	687/667	842	96/137	42/50
PQ30-8	1706/1636	768/698	938	96/137	49/60
PQ30-9	-/1877	-/731	1146	-/137	-/75
PQ30-10	-/1973	-/731	1242	-/137	-/77
PQ30-11	-/2069	-/731	1338	-/137	-/79
PQ30-12	-/2280	-/826	1434	-/137	-/85
PQ30-13	-/2356	-/826	1530	-/137	-/87
PQ30-14	-/2520	-/894	1626	-/137	-/96
PQ30-15	-/2594	-/894	1722	-/137	-/98
PQ30-16	-/2712	-/894	1818	-/137	-/106
PQ30-17	-/2808	-/894	1914	-/137	-/108
PQ30-18	-/2969	-/959	2010	-/137	-/117
PQ30-19	-/3085	-/959	2106	-/137	-/119
PQ30-20	-/3161	-/959	2202	-/137	-/120
PQ30-21	-/3257	-/959	2298	-/137	-/122
PQ30-22	-/3510	-/1116	2394	-/137	-/138
PQ30-23	-/3606	-/1116	2490	-/137	-/140
PQ30-24	-/3702	-/1116	2586	-/137	-/142
PQ30-25	-/3788	-/1116	2682	-/137	-/144

## PQ42 Installation dimension

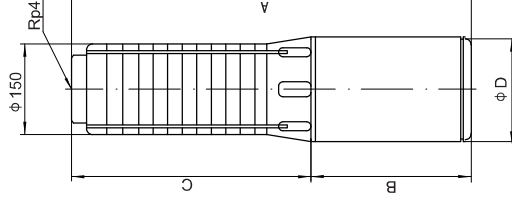


## Dimension and weight

Model	Dimension (mm)(with 4/6" motor)				Weight (kg)
	A	B	C	$\phi D$	
PQ42-1	845/-	467/-	378	96/-	29/-
PQ42-2	1013/-	522/-	491	96/-	33/-
PQ42-3	1291/1271	687/667	604	96/137	40/48
PQ42-4	1485/1415	768/698	717	96/137	47/58
PQ42-5	1598/1528	768/698	830	96/137	49/60
PQ42-6	-/1690	-/731	959	-/137	-/73
PQ42-7	-/1898	-/826	1072	-/137	-/80
PQ42-8	-/2079	-/894	1185	-/137	-/89
PQ42-9	-/2192	-/894	1298	-/137	-/97
PQ42-10	-/2305	-/894	1411	-/137	-/100
PQ42-11	-/2483	-/959	1524	-/137	-/109
PQ42-12	-/2596	-/959	1637	-/137	-/111
PQ42-13	-/2866	-/1116	1750	-/137	-/127
PQ42-14	-/2979	-/1116	1863	-/137	-/129
PQ42-15	-/3092	-/1116	1976	-/137	-/131
PQ42-16	-/3332	-/1243	2089	-/137	-/145
PQ42-17	-/3445	-/1243	2202	-/137	-/147
PQ42-18	-/3558	-/1243	2315	-/137	-/162
PQ42-19	-/3671	-/1243	2428	-/137	-/164
PQ42-20	-/3784	-/1243	2541	-/137	-/167
PQ42-21	-/3844	-/1190	2654	-/137	-/192
PQ42-22	-/3957	-/1190	2767	-/137	-/194

Note: Dimension B is different according to different configurations.

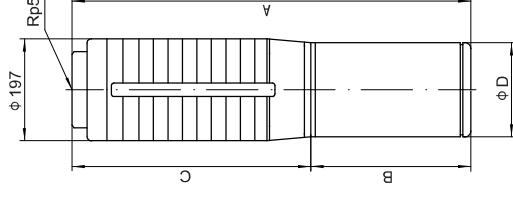
## PQ60 Installation dimension



## Dimension and weight

Model	Dimension (mm)(with 6/8" motor)				Weight (kg)
	A	B	C	$\phi D$	
PQ60-1	835/-	467/-	368	96/-	30/-
PQ60-2-2	1003/-	522/-	481	96/-	33/-
PQ60-2	1068/1114	587/633	481	96/137	35/41
PQ60-3	1281/1261	687/667	594	96/137	41/49
PQ60-4	1475/1405	768/698	707	96/137	48/59
PQ60-5	-/1551	-/731	820	-/137	-/72
PQ60-6	-/1775	-/826	949	-/137	-/78
PQ60-7	-/1956	-/894	1082	-/137	-/87
PQ60-8-2	-/2069	-/894	1175	-/137	-/88
PQ60-8	-/2162	-/894	1288	-/137	-/97
PQ60-9-2	-/2247	-/959	1288	-/137	-/105
PQ60-9	-/2360	-/959	1401	-/137	-/107
PQ60-10	-/2630	-/1116	1514	-/137	-/123
PQ60-11	-/2743	-/1116	1627	-/137	-/125
PQ60-12	-/2743	-/1116	1627	-/137	-/125
PQ60-13	-/2993	-/1243	1740	-/137	-/139
PQ60-14	-/3096	-/1243	1853	-/137	-/141
PQ60-15	-/3209	-/1243	1966	-/137	-/156
PQ60-16	-/3322	-/1243	2079	-/137	-/158
PQ60-17	-/3435	-/1243	2192	-/137	-/160
PQ60-18	-/3495	-/1190	2305	-/137	-/186
PQ60-19	-/3608	-/1190	2418	-/137	-/188
PQ60-20	-/3721	-/1190	2531	-/137	-/190
PQ60-21	-/3834	-/1190	2644	-/137	-/191

## PQ75 Installation dimension



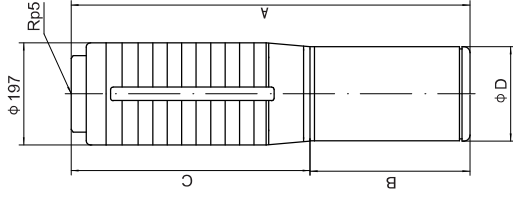
## Dimension and weight

Model	Dimension (mm)(with 6/8" motor)				Weight (kg)
	A	B	C	$\phi D$	
PQ75-1	1121/-	633/-	488/-	137/-	56/-
PQ75-2	1312/-	698/-	614/-	137/-	78/-
PQ75-3	1566/-	826/-	740/-	137/-	92/-
PQ75-4	1760/1757	894/874	866/883	137/184	110/134
PQ75-5	1951/1913	959/904	992/1009	137/184	122/152
PQ75-6	2234/2065	1116/930	1118/1135	137/195	141/178
PQ75-7	2487/2301	1243/1040	1244/1261	137/195	171/211
PQ75-8	2613/2427	1243/1040	1370/1387	137/195	176/216
PQ75-9	2686/2583	1190/1070	1486/1513	137/195	204/233
PQ75-10	2812/2709	1190/1070	1622/1639	137/195	209/238
PQ75-11	-/2895	-/1130	-/1765	-/195	-/256
PQ75-12	-/3021	-/1130	-/1891	-/195	-/261
PQ75-13	-/3267	-/1250	-/2017	-/195	-/279
PQ75-14	-/3393	-/1250	-/2143	-/195	-/285
PQ75-15	-/3519	-/1250	-/2269	-/195	-/290
PQ75-16	-/3760	-/1365	-/2395	-/195	-/309
PQ75-17	-/3886	-/1365	-/2521	-/195	-/315
PQ75-18	-/4077	-/1430	-/2647	-/195	-/341
PQ75-19	-/4203	-/1430	-/2773	-/195	-/346
PQ75-20	-/4329	-/1430	-/2899	-/195	-/351

Note: Dimension B is different according to different configurations.

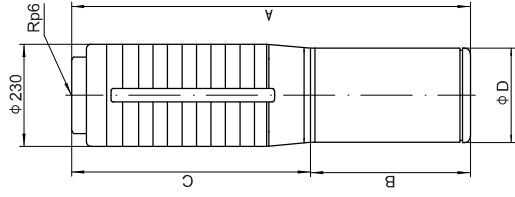
## PQ95 Installation dimension

Model	Dimension (mm)(with 6/8/10" motor)				Weight (kg)
	A	B	C	φD	
PQ95-1	1121/-	633/-	488/-	137/-	57/-
PQ95-2	1345/-	731/-	614/-	137/-	83/-
PQ95-3	1634/-	894/-	740/-	137/-	100/-
PQ95-4	1825/1787	959/904	866/683	137/184	119/148
PQ95-5	2108/1939	1116/930	992/1009	137/195	138/175
PQ95-6	2361/2175	1243/1040	1118/1135	137/195	155/188
PQ95-7	2487/2301	1243/1040	1244/1261	137/195	174/213
PQ95-8	2560/2457	1190/1070	1370/1387	137/195	202/231
PQ95-9	2686/2583	1190/1070	1496/1513	137/195	208/237
PQ95-10	-/2769	-/1130	-/1639	-/195	-/254
PQ95-11	-/2895	-/1130	-/1765	-/195	-/260
PQ95-12	-/3141	-/1250	-/1891	-/195	-/279
PQ95-13	-/3267	-/1250	-/2017	-/195	-/284
PQ95-14	-/3393	-/1250	-/2143	-/195	-/290
PQ95-15	-/3634	-/1365	-/2269	-/195	-/310
PQ95-16	-/3760	-/1365	-/2395	-/195	-/316
PQ95-17	-/3951	-/1430	-/2521	-/195	-/342
PQ95-18	-/4077	-/1430	-/2647	-/195	-/348



## PQ120 Installation dimension

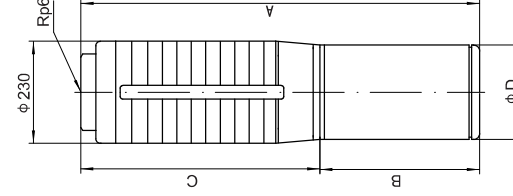
Model	Dimension (mm)(with 6/8/10" motor)				Weight (kg)
	A	B	C	φD	
PQ120-1	1357/-	826/-	631/-	137/-	96/-
PQ120-2	1585/1594	894/874	691/720	137/184	111/135
PQ120-2-1	1650/1624	959/904	691/720	137/184	118/140
PQ120-2-2	1807/1650	1116/930	691/720	137/195	127/155
PQ120-3	2094/1920/2002	1243/1040/1122	85/1880/880	137/195/236	142/173/212
PQ120-3-1	2094/1920/2002	1243/1040/1122	85/1880/880	137/195/236	146/187/227
PQ120-3-2	2094/1920/2002	1243/1040/1122	85/1880/880	137/195/236	148/187/227
PQ120-4	2201/2110/2202	1190/1070/1162	1011/1040/1040	137/195/236	166/210/252
PQ120-4-1	2201/2110/2202	1190/1070/1162	1011/1040/1040	137/195/236	166/210/252
PQ120-4-2	2201/2110/2202	1190/1070/1162	1011/1040/1040	137/195/236	166/210/252
PQ120-5	-/2330/2382	-/1130/1192	-/1200/1200	-/195/236	-/233/282
PQ120-5-1	-/2330/2382	-/1130/1192	-/1200/1200	-/195/236	-/233/282
PQ120-5-2	-/2330/2382	-/1130/1192	-/1200/1200	-/195/236	-/233/282
PQ120-6	-/2610/2632	-/1250/1272	-/1360/1360	-/195/236	-/261/323
PQ120-6-1	-/2610/2632	-/1250/1272	-/1360/1360	-/195/236	-/261/323
PQ120-6-2	-/2610/2632	-/1250/1272	-/1360/1360	-/195/236	-/261/323
PQ120-7	-/2885/2852	-/1365/1332	-/1520/1520	-/195/236	-/288/341
PQ120-7-1	-/2885/2852	-/1365/1332	-/1520/1520	-/195/236	-/288/341
PQ120-7-2	-/2885/2852	-/1365/1332	-/1520/1520	-/195/236	-/288/341
PQ120-8	-/3110/3102	-/1430/1422	-/1680/1680	-/195/236	-/314/395
PQ120-8-1	-/3110/3102	-/1430/1422	-/1680/1680	-/195/236	-/314/395
PQ120-8-2	-/3110/3102	-/1430/1422	-/1680/1680	-/195/236	-/314/395
PQ120-9	-/3460/3372	-/1620/1532	-/1840/1840	-/195/236	-/342/416
PQ120-9-1	-/3460/3372	-/1620/1532	-/1840/1840	-/195/236	-/342/416
PQ120-9-2	-/3460/3372	-/1620/1532	-/1840/1840	-/195/236	-/342/416
PQ120-10	-/3620/3532	-/1620/1532	-/2000/2000	-/195/236	-/350/424
PQ120-10-1	-/3620/3532	-/1620/1532	-/2000/2000	-/195/236	-/350/424
PQ120-10-2	-/3620/3532	-/1620/1532	-/2000/2000	-/195/236	-/350/424
PQ120-11	-/3965/3624	-/1805/1464	-/2160/2160	-/195/236	-/376/461
PQ120-11-1	-/3965/3624	-/1805/1464	-/2160/2160	-/195/236	-/376/461
PQ120-11-2	-/3965/3624	-/1805/1464	-/2160/2160	-/195/236	-/376/461
PQ120-12	-/4077	-/1430	-/2647	-/195	-/348



Note: Dimension B is different according to different configurations.

## PQ150 Installation dimension

Model	Dimension (mm)(with 6/8/10" motor)				Weight (kg)
	A	B	C	φD	
PQ150-1-1	1262/-	731/-	531/-	137/-	92/-
PQ150-1	1425/-	894/-	614/-	137/-	100/-
PQ150-2-1	1607/1650	1116/930	691/720	137/195	128/156
PQ150-2-2	1650/1624	959/904	691/720	137/184	119/141
PQ150-2-3	1807/1650	1116/930	691/720	137/195	128/156
PQ150-3	2094/1920/2002	1243/1040/1122	85/1880/880	137/195/236	149/188/228
PQ150-3-1	2041/1950/2042	1190/1070/1162	85/1880/880	137/195/236	158/202/246
PQ150-3-2	-/1950/2042	-/1070/1162	-/680/880	-/195/236	-/202/246
PQ150-4	-/2170/2232	-/1130/1192	-/1040/1040	-/195/236	-/225/274
PQ150-4-1	-/2170/2232	-/1130/1192	-/1040/1040	-/195/236	-/225/274
PQ150-4-2	-/2170/2232	-/1130/1192	-/1040/1040	-/195/236	-/225/274
PQ150-5	-/2450/2472	-/1250/1272	-/1200/1200	-/195/236	-/253/315
PQ150-5-1	-/2450/2472	-/1250/1272	-/1200/1200	-/195/236	-/253/315
PQ150-5-2	-/2450/2472	-/1250/1272	-/1200/1200	-/195/236	-/253/315
PQ150-6	-/2565/2532	-/1365/1332	-/1200/1200	-/195/236	-/280/333
PQ150-6-1	-/2565/2532	-/1365/1332	-/1200/1200	-/195/236	-/280/333
PQ150-6-2	-/2565/2532	-/1365/1332	-/1200/1200	-/195/236	-/280/333
PQ150-7	-/2970/2782	-/1430/1422	-/1360/1360	-/195/236	-/288/379
PQ150-7-1	-/2970/2782	-/1430/1422	-/1360/1360	-/195/236	-/288/379
PQ150-7-2	-/2970/2782	-/1430/1422	-/1360/1360	-/195/236	-/288/379
PQ150-8	-/2950/2942	-/1430/1422	-/1520/1520	-/195/236	-/306/387
PQ150-8-1	-/2950/2942	-/1430/1422	-/1520/1520	-/195/236	-/306/387
PQ150-8-2	-/2950/2942	-/1430/1422	-/1520/1520	-/195/236	-/306/387
PQ150-9	-/3140/3052	-/1620/1532	-/1520/1520	-/195/236	-/326/400
PQ150-9-1	-/3140/3052	-/1620/1532	-/1520/1520	-/195/236	-/326/400
PQ150-9-2	-/3140/3052	-/1620/1532	-/1520/1520	-/195/236	-/326/400
PQ150-10	-/3300/3212	-/1620/1532	-/1680/1680	-/195/236	-/334/408
PQ150-10-1	-/3300/3212	-/1620/1532	-/1680/1680	-/195/236	-/334/408
PQ150-10-2	-/3300/3212	-/1620/1532	-/1680/1680	-/195/236	-/334/408
PQ150-11	-/3485/3144	-/1805/1464	-/1680/1680	-/195/236	-/360/426
PQ150-11-1	-/3485/3144	-/1805/1464	-/1680/1680	-/195/236	-/360/426
PQ150-11-2	-/3485/3144	-/1805/1464	-/1680/1680	-/195/236	-/360/426
PQ150-12	-/3645/3304	-/1805/1464	-/1840/1840	-/195/236	-/369/435
PQ150-12-1	-/3645/3304	-/1805/1464	-/1840/1840	-/195/236	-/369/435
PQ150-12-2	-/3645/3304	-/1805/1464	-/1840/1840	-/195/236	-/369/435
PQ150-13	-/3645/3304	-/1805/1464	-/1840/1840	-/195/236	-/369/435



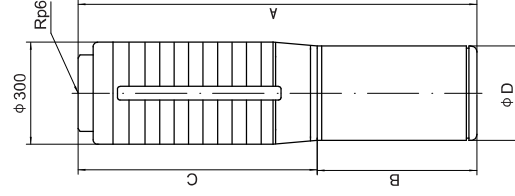
## PQ120 Installation dimension

Model	Dimension (mm)(with 6/8/10" motor)				Weight (kg)
	A	B	C	φD	
PQ120-1	1357/-	826/-	631/-	137/-	96/-
PQ120-2	1585/1594	894/874	691/720	137/184	111/135
PQ120-2-1	1650/1624	959/904	691/720	137/184	118/140
PQ120-2-2	1807/1650	1116/930	691/720	137/195	127/155
PQ120-3	2094/1920/2002	1243/1040/1122	85/1880/880	137/195/236	142/173/212
PQ120-3-1	2094/1920/2002	1243/1040/1122	85/1880/880	137/195/236	146/187/227
PQ120-3-2	2094/1920/2002	1243/1040/1122	85/1880/880	137/195/236	148/187/227
PQ120-4	2201/2110/2202	1190/1070/1162	1011/1040/1040	137/195/236	166/210/252
PQ120-4-1	2201/2110/2202	1190/1070/1162	1011/1040/1040	137/195/236	166/210/252
PQ120-4-2	2201/2110/2202	1190/1070/1162	1011/1040/1040	137/195/236	166/210/252
PQ120-5	-/2330/2382	-/1130/1192	-/1200/1200	-/195/236	-/233/282
PQ120-5-1	-/2330/2382	-/1130/1192	-/1200/1200	-/195/236	-/233/282
PQ120-5-2	-/2330/2382	-/1130/1192	-/1200/1200	-/195/236	-/233/282
PQ120-6	-/2610/2632	-/1250/1272	-/1360/1360	-/195/236	-/261/323
PQ120-6-1	-/2610/2632	-/1250/1272	-/1360/1360	-/195/236	-/261/323
PQ120-6-2	-/2610/2632	-/1250/1272	-/1360/1360	-/195/236	-/261/323
PQ120-7	-/2885/2852	-/1365/1332	-/1520/1520	-/195/236	-/288/341
PQ120-7-1	-/2885/2852	-/1365/1332	-/1520/1520	-/195/236	-/288/341
PQ120-7-2	-/2885/2852	-/1365/1332	-/1520/1520	-/195/236	-/288/341
PQ120-8	-/3110/3102	-/1430/1422	-/1680/1680	-/195/236	-/314/395
PQ120-8-1	-/3110/3102	-/1430/1422	-/1680/1680	-/195/236	-/314/395
PQ120-8-2	-/3110/3102	-/1430/1422	-/1680/1680	-/195/236	-/314/395
PQ120-9	-/3460/3372	-/1620/1532	-/1840/1840	-/195/236	-/342/416
PQ120-9-1	-/3460/3372	-/1620/1532	-/1840/1840	-/195/236	-/342/416
PQ120-9-2	-/3460/3372	-/1620/1532	-/1840/1840	-/195/236	-/342/416
PQ120-10	-/3620/3532	-/1620/1532	-/2000/2000	-/195/236	-/350/424
PQ120-10-1	-/3620/3532	-/1620/1532	-/2000/2000	-/195/236	-/350/424
PQ120-10-2	-/3620/3532	-/1620/1532	-/2000/2000	-/195/236	-/350/424
PQ120-11	-/3965/3624	-/1805/1464	-/2160/2160	-/195/236	-/376/461
PQ120-11-1	-/3965/3624	-/1805/1464	-/2160/2160	-/195/236	-/376/461
PQ120-11-2	-/3965/3624	-/1805/1464	-/2160/2160	-/195/236	-/376/461
PQ120-12	-/4077	-/1430	-/2647	-/195	-/348

## PQ150 Installation dimension

Model	Dimension (mm)(with 10" motor)				Weight (kg)
	A	B	C	φD	
PQ200-1	1721	1122	599	236	221
PQ200-2-2B	1955	1162	793	236	255
PQ200-2-2A	1985	1192	793	236	275
PQ200-2-A	2065	1272	793	236	308
PQ200-2	2065	1272	793	236	308
PQ200-3-2B	2409	1422	987	236	386
PQ200-3-A-B	2409	1422	987	236	386
PQ200-3-2A	2409	1422	987	236	386
PQ200-3-B	2409	1422	987	236	386
PQ200-3-A	2409	1422	987	236	386
PQ200-3	2519	1532	987	236	399
PQ200-4-2B	2713	1532	1181	236	416
PQ200-4-2A	2645	1464	1181	236	453
PQ200-4-A	2645	1464	1181	236	453
PQ200-4	2645	1464	1181	236	453

## PQ200 Installation dimension



Note: Dimension B is different according to different configurations.